

## Integrin beta 4 antibody [10B10D5]

**Cat. No. GTX60736**

<b>Host</b>	Mouse
<b>Clonality</b>	Monoclonal
<b>Isotype</b>	IgG1
<b>Applications</b>	WB, IHC-P, FCM, ELISA
<b>Reactivity</b>	Human

**Package**  
100 µl

## Applications

**Application Note**

\*Optimal dilutions/concentrations should be determined by the researcher.

Suggested dilution	Recommended dilution
WB	1/500 - 1/2000
IHC-P	1/200 - 1/1000
FCM	1/200 - 1/400
ELISA	1/10000

Not tested in other applications.

**Calculated MW** 202 kDa. ([Note](#))

## Properties

<b>Form</b>	Liquid
<b>Buffer</b>	Ascites
<b>Preservative</b>	0.03% Sodium azide
<b>Storage</b>	Store as concentrated solution. Centrifuge briefly prior to opening vial. For short-term storage (1-2 weeks), store at 4°C. For long-term storage, aliquot and store at -20°C or below. Avoid multiple freeze-thaw cycles.
<b>Immunogen</b>	Purified recombinant fragment of human ITGB4 (AA: 1619-1822) expressed in E. Coli.
<b>Purification</b>	Unpurified
<b>Conjugation</b>	Unconjugated

**Note**

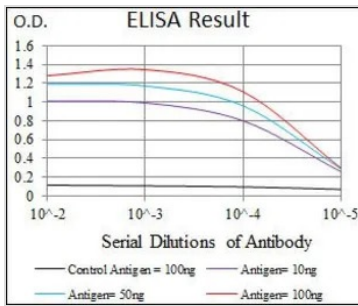
For laboratory research use only. Not for any clinical, therapeutic, or diagnostic use in humans or animals. Not for animal or human consumption.

Purchasers shall not, and agree not to enable third parties to, analyze, copy, reverse engineer or otherwise attempt to determine the structure or sequence of the product.



For full product information, images and publications, please visit our [website](#).

DATA IMAGES



**GTX60736 ELISA Image**

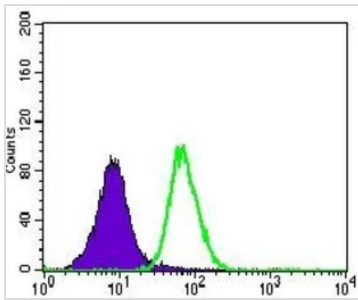
ELISA analysis of antigen using GTX60736 Integrin beta 4 antibody [10B10D5].

Black : Control antigen 100ng

Purple : Antigen 10ng

Blue : Antigen 50ng

Red : Antigen 100ng

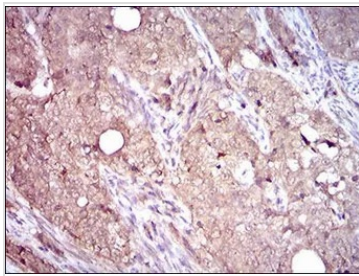


**GTX60736 FCM Image**

FACS analysis of A549 cells using GTX60736 Integrin beta 4 antibody [10B10D5].

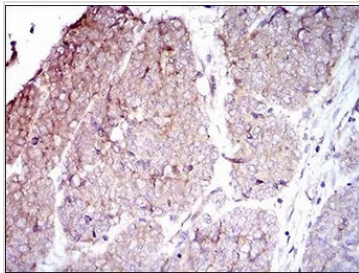
Green : Integrin beta 4

Purple : negative control



**GTX60736 IHC-P Image**

IHC-P analysis of cervical cancer tissue using GTX60736 Integrin beta 4 antibody [10B10D5].



**GTX60736 IHC-P Image**

IHC-P analysis of esophageal cancer tissue using GTX60736 Integrin beta 4 antibody [10B10D5].



For full product information, images and publications, please visit our [website](http://www.genetex.com).