

## Rex1 antibody [5E11E7]

**Cat. No. GTX60780**

<b>Host</b>	Mouse
<b>Clonality</b>	Monoclonal
<b>Isotype</b>	IgG1
<b>Applications</b>	WB, IHC-P, FCM, ELISA
<b>Reactivity</b>	Human

References ( 1 )

Package

100 µg

## Applications

**Application Note**

\*Optimal dilutions/concentrations should be determined by the researcher.

Suggested dilution	Recommended dilution
WB	1/500 - 1/2000
IHC-P	1/200 - 1/1000
FCM	1/200 - 1/400
ELISA	1/10000

Not tested in other applications.

**Calculated MW** 35 kDa. ( [Note](#) )

## Properties

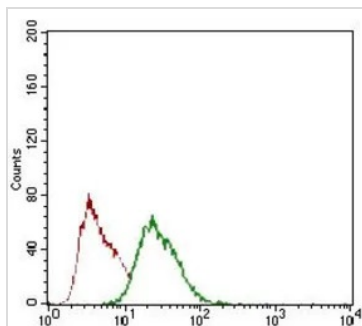
<b>Form</b>	Liquid
<b>Buffer</b>	PBS
<b>Preservative</b>	0.05% Sodium azide
<b>Storage</b>	Store as concentrated solution. Centrifuge briefly prior to opening vial. For short-term storage (1-2 weeks), store at 4°C. For long-term storage, aliquot and store at -20°C or below. Avoid multiple freeze-thaw cycles.
<b>Concentration</b>	1 mg/ml (Please refer to the vial label for the specific concentration.)
<b>Immunogen</b>	Purified recombinant fragment of human Rex1 (AA: 249-310) expressed in E. Coli.
<b>Purification</b>	Protein G Purified
<b>Conjugation</b>	Unconjugated

**Note**

For laboratory research use only. Not for any clinical, therapeutic, or diagnostic use in humans or animals. Not for animal or human consumption.

Purchasers shall not, and agree not to enable third parties to, analyze, copy, reverse engineer or otherwise attempt to determine the structure or sequence of the product.

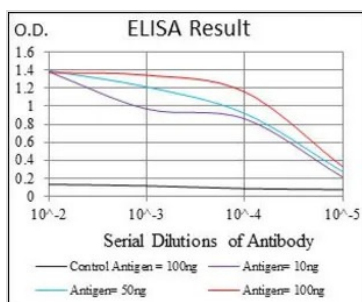
For full product information, images and publications, please visit our [website](#).

**DATA IMAGES**

**GTX60780 FCM Image**

FACS analysis of HEK293 cells using GTX60780 Rex1 antibody [5E11E7].

Green : Rex1

Red : negative control


**GTX60780 ELISA Image**

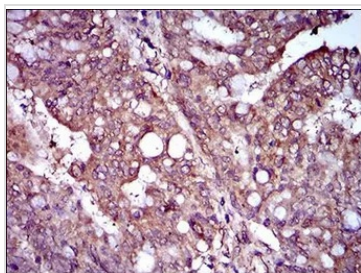
ELISA analysis of antigen using GTX60780 Rex1 antibody [5E11E7].

Black : Control antigen 100ng

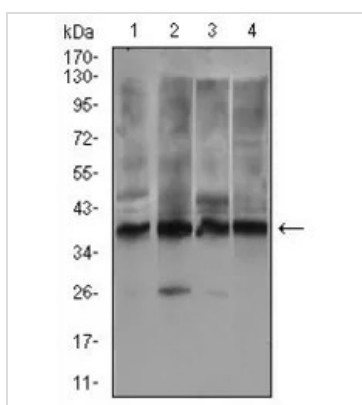
Purple : Antigen 10ng

Blue : Antigen 50ng

Red : Antigen 100ng


**GTX60780 IHC-P Image**

IHC-P analysis of rectum cancer tissue using GTX60780 Rex1 antibody [5E11E7].


**GTX60780 WB Image**

WB analysis of Jurkat (1), HEK293 (2), Raji (3) and PC-3 (4) cell lysate using GTX60780 Rex1 antibody [5E11E7].



For full product information, images and publications, please visit our [website](http://www.genetex.com).