

## CD24 antibody [4F4E10]

Cat. No. GTX60789

Host	Mouse
Clonality	Monoclonal
Isotype	IgG1
Applications	WB, FCM, ELISA
Reactivity	Human

Package  
100 µg

## Applications

## Application Note

\*Optimal dilutions/concentrations should be determined by the researcher.

Suggested dilution	Recommended dilution
WB	1/500 - 1/2000
FCM	1/200 - 1/400
ELISA	1/10000

Not tested in other applications.

Calculated MW 8 kDa. ( [Note](#) )

## Properties

Form	Liquid
Buffer	PBS
Preservative	0.05% Sodium azide
Storage	Store as concentrated solution. Centrifuge briefly prior to opening vial. For short-term storage (1-2 weeks), store at 4°C. For long-term storage, aliquot and store at -20°C or below. Avoid multiple freeze-thaw cycles.
Concentration	1 mg/ml (Please refer to the vial label for the specific concentration.)
Immunogen	Purified recombinant fragment of human CD24 (AA: 15-80) expressed in E. Coli.
Purification	Protein G Purified
Conjugation	Unconjugated

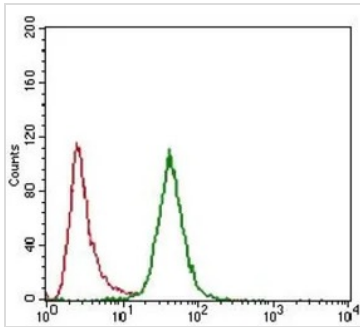
## Note

For laboratory research use only. Not for any clinical, therapeutic, or diagnostic use in humans or animals. Not for animal or human consumption.

Purchasers shall not, and agree not to enable third parties to, analyze, copy, reverse engineer or otherwise attempt to determine the structure or sequence of the product.



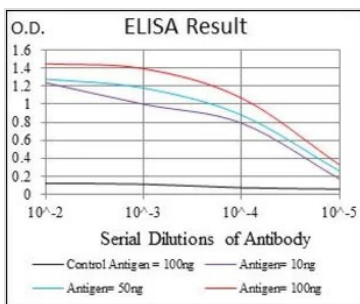
For full product information, images and publications, please visit our [website](#).

**DATA IMAGES**

**GTX60789 FCM Image**

FACS analysis of HeLa cells using GTX60789 CD24 antibody [4F4E10].

Green : CD24

Red : negative control


**GTX60789 ELISA Image**

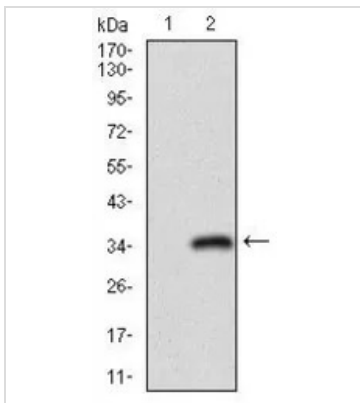
ELISA analysis of antigen using GTX60789 CD24 antibody [4F4E10].

Black : Control antigen 100ng

Purple : Antigen 10ng

Blue : Antigen 50ng

Red : Antigen 100ng


**GTX60789 WB Image**

WB analysis of HEK293 (1) and CD24 (AA: 15-80)-hlgGfC transfected HEK293 (2) cell lysate using GTX60789 CD24 antibody [4F4E10].



For full product information, images and publications, please visit our [website](http://www.genetex.com).