

## IL2 Receptor alpha antibody [1B5D12]

Cat. No. GTX60792

Host	Mouse
Clonality	Monoclonal
Isotype	IgG1
Applications	WB, ICC/IF, IHC-P, ELISA
Reactivity	Human, Mouse, Rat, Monkey

Package  
100 µg

## Applications

## Application Note

\*Optimal dilutions/concentrations should be determined by the researcher.

Suggested dilution	Recommended dilution
WB	1/500 - 1/2000
ICC/IF	1/200 - 1/1000
IHC-P	1/200 - 1/1000
ELISA	1/10000

Not tested in other applications.

Calculated MW 31 kDa. ( [Note](#) )

## Properties

Form	Liquid
Buffer	PBS
Preservative	0.05% Sodium azide
Storage	Store as concentrated solution. Centrifuge briefly prior to opening vial. For short-term storage (1-2 weeks), store at 4°C. For long-term storage, aliquot and store at -20°C or below. Avoid multiple freeze-thaw cycles.
Concentration	1 mg/ml (Please refer to the vial label for the specific concentration.)
Immunogen	Purified recombinant fragment of human IL2RA (AA: 34-139) expressed in E. Coli.
Purification	Protein G Purified
Conjugation	Unconjugated

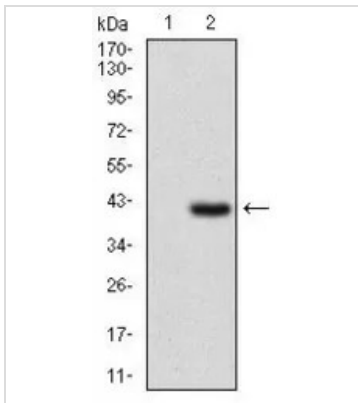
## Note

For laboratory research use only. Not for any clinical, therapeutic, or diagnostic use in humans or animals. Not for animal or human consumption.

Purchasers shall not, and agree not to enable third parties to, analyze, copy, reverse engineer or otherwise attempt to determine the structure or sequence of the product.

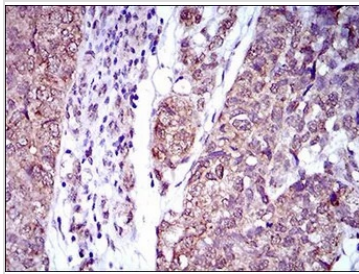
For full product information, images and publications, please visit our [website](#).

DATA IMAGES



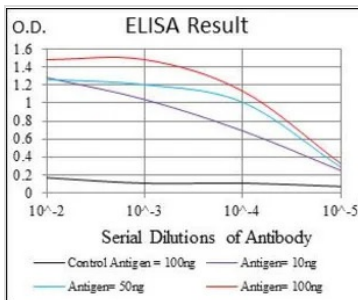
**GTX60792 WB Image**

WB analysis of HEK293 (1) and IL2RA (AA: 34-139)-hlgGfC transfected HEK293 (2) cell lysate using GTX60792 IL2 Receptor alpha antibody [1B5D12].



**GTX60792 IHC-P Image**

IHC-P analysis of bladder cancer tissue using GTX60792 IL2 Receptor alpha antibody [1B5D12].



**GTX60792 ELISA Image**

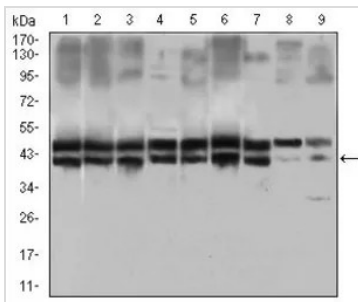
ELISA analysis of antigen using GTX60792 IL2 Receptor alpha antibody [1B5D12].

Black : Control antigen 100ng

Purple : Antigen 10ng

Blue : Antigen 50ng

Red : Antigen 100ng



**GTX60792 WB Image**

WB analysis of HeLa (1), MOLT4 (2), HEK293 (3), A549 (4), Jurkat (5), K562 (6), Cos7 (7), PC-12 (8) and NIH3T3 (9) cell lysate using GTX60792 IL2 Receptor alpha antibody [1B5D12].



For full product information, images and publications, please visit our [website](http://www.genetex.com).