

# IL3 Receptor alpha antibody [10B8E7]

**Cat. No. GTX60797**

<b>Host</b>	Mouse
<b>Clonality</b>	Monoclonal
<b>Isotype</b>	IgG1
<b>Application</b>	WB, ICC/IF, FACS, ELISA
<b>Reactivity</b>	Human

**Package**  
100 µl

## APPLICATION

### Application Note

\*Optimal dilutions/concentrations should be determined by the researcher.

Suggested dilution	Recommended dilution
WB	1/500 - 1/2000
ICC/IF	1/200 - 1/1000
FACS	1/200 - 1/400
ELISA	1/10000

Not tested in other applications.

**Calculated MW** 43 kDa. ( [Note](#) )

## PROPERTIES

<b>Form</b>	Liquid
<b>Buffer</b>	Ascites
<b>Preservative</b>	0.03% Sodium azide
<b>Storage</b>	Store as concentrated solution. Centrifuge briefly prior to opening vial. For short-term storage (1-2 weeks), store at 4°C. For long-term storage, aliquot and store at -20°C or below. Avoid multiple freeze-thaw cycles.
<b>Immunogen</b>	Purified recombinant fragment of human IL3RA (AA: 200-305) expressed in E. Coli.
<b>Purification</b>	Unpurified
<b>Conjugation</b>	Unconjugated

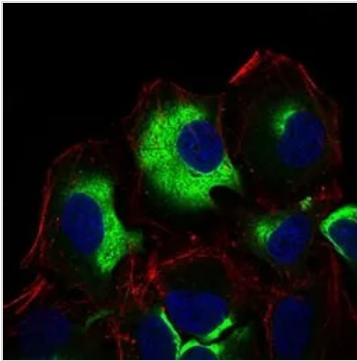
### Note

For laboratory research use only. Not for any clinical, therapeutic, or diagnostic use in humans or animals. Not for animal or human consumption.

Purchasers shall not, and agree not to enable third parties to, analyze, copy, reverse engineer or otherwise attempt to determine the structure or sequence of the product.



For full product information, images and publications, please visit our [website](#).

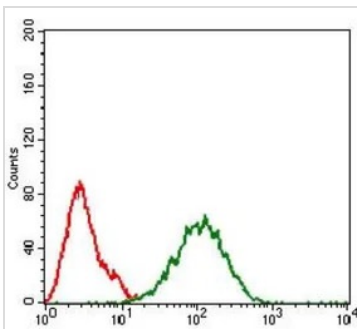
**DATA IMAGES**

**GTX60797 ICC/IF Image**

ICC/IF analysis of HeLa cells using GTX60797 IL3 Receptor alpha antibody [10B8E7].

Green : IL3 Receptor alpha

Blue: DRAQ5 fluorescent DNA dye

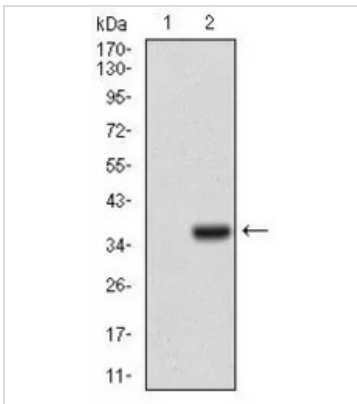
Red: Actin filaments


**GTX60797 FACS Image**

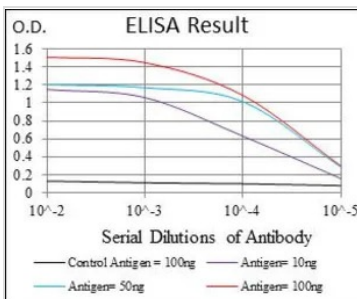
FACS analysis of HeLa cells using GTX60797 IL3 Receptor alpha antibody [10B8E7].

Green : IL3 Receptor alpha

Red : negative control


**GTX60797 WB Image**

WB analysis of HEK293 (1) and IL3RA (AA: 200-305)-hlgGfC transfected HEK293 (2) cell lysate using GTX60797 IL3 Receptor alpha antibody [10B8E7].


**GTX60797 ELISA Image**

ELISA analysis of antigen using GTX60797 IL3 Receptor alpha antibody [10B8E7].

Black : Control antigen 100ng

Purple : Antigen 10ng

Blue : Antigen 50ng

Red : Antigen 100ng



For full product information, images and publications, please visit our [website](https://www.genetex.com).