

CDC73 antibody - ChIP grade

Cat. No. GTX60804

Host	Rabbit
Clonality	Polyclonal
Isotype	IgG
Applications	WB, IP, ChIP assay
Reactivity	Human, Drosophila

Package
50 µg

Applications

Application Note

*Optimal dilutions/concentrations should be determined by the researcher.

Suggested dilution	Recommended dilution
WB	1:1,000
IP	Assay dependent
ChIP assay	1-5 µg

Not tested in other applications.

Calculated MW 61 kDa. ([Note](#))

Properties

Form	Liquid
Buffer	PBS
Preservative	0.05% Sodium azide, 0.05% ProClin 300
Storage	Store as concentrated solution. Centrifuge briefly prior to opening vial. For short-term storage (1-2 weeks), store at 4°C. For long-term storage, aliquot and store at -20°C or below. Avoid multiple freeze-thaw cycles.
Concentration	2 mg/ml (Please refer to the vial label for the specific concentration.)
Immunogen	Drosophila Cdc73 (Cell division cycle protein 73), using the full length recombinant protein.
Purification	Purified by affinity chromatography
Conjugation	Unconjugated

Note

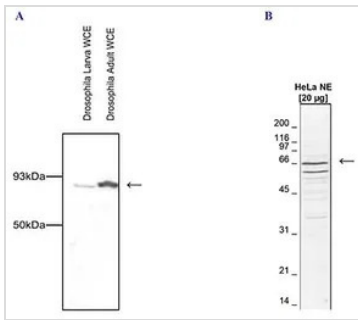
For laboratory research use only. Not for any clinical, therapeutic, or diagnostic use in humans or animals. Not for animal or human consumption.

Purchasers shall not, and agree not to enable third parties to, analyze, copy, reverse engineer or otherwise attempt to determine the structure or sequence of the product.



For full product information, images and publications, please visit our [website](#).

DATA IMAGES

**GTX60804 WB Image**

WB analysis of whole cell extracts (WCE) from drosophila larva and drosophila adults (Figure 1A) or on nuclear extracts from HeLa cells (HeLa NE, 20 µg) (Figure 1B) using GTX60804 CDC73 antibody - ChIP grade.

Dilution : 1:1,000



For full product information, images and publications, please visit our [website](#).