

Histone H2A.Z (acetyl Lys4/Lys7/Lys11) antibody - ChIP grade

Cat. No. GTX60813

| | |
|---------------------|--|
| Host | Rabbit |
| Clonality | Polyclonal |
| Isotype | IgG |
| Applications | WB, ICC/IF, Dot, ELISA, ChIP assay, ChIP-seq |
| Reactivity | Human, Mouse |

References (1)

Package

50 µg

Applications

Application Note

*Optimal dilutions/concentrations should be determined by the researcher.

| Suggested dilution | Recommended dilution |
|--------------------|----------------------|
| WB | Assay dependent |
| ICC/IF | Assay dependent |
| Dot | Assay dependent |
| ELISA | Assay dependent |
| ChIP assay | Assay dependent |
| ChIP-seq | Assay dependent |

Not tested in other applications.

Properties

| | |
|----------------------|--|
| Form | Liquid |
| Buffer | PBS |
| Preservative | 0.05% Sodium azide, 0.05% ProClin 300 |
| Storage | Store as concentrated solution. Centrifuge briefly prior to opening vial. For short-term storage (1-2 weeks), store at 4°C. For long-term storage, aliquot and store at -20°C or below. Avoid multiple freeze-thaw cycles. |
| Concentration | 1.09 mg/ml (Please refer to the vial label for the specific concentration.) |
| Immunogen | The region of histone H2A.Z containing the acetylated lysines 4, 7 and 11, using a KLH-conjugated synthetic peptide. |
| Purification | Purified by affinity chromatography |
| Conjugation | Unconjugated |

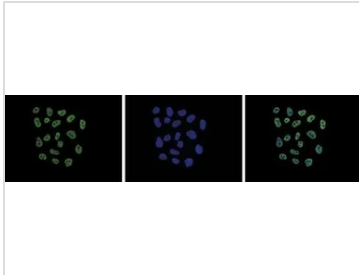


For full product information, images and publications, please visit our [website](#).

For laboratory research use only. Not for any clinical, therapeutic, or diagnostic use in humans or animals. Not for animal or human consumption.

Note
Purchasers shall not, and agree not to enable third parties to, analyze, copy, reverse engineer or otherwise attempt to determine the structure or sequence of the product.

DATA IMAGES



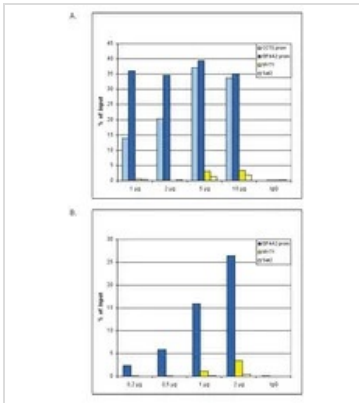
GTX60813 ICC/IF Image

ICC/IF analysis of 4% paraformaldehyde fixed HeLa cells using GTX60813 Histone H2A.Z (acetyl Lys4/Lys7/Lys11) antibody - ChIP grade.

Green : Primary antibody

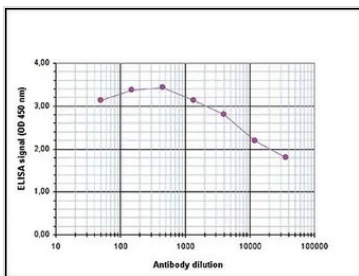
Blue : DAPI

Dilution : 1:500



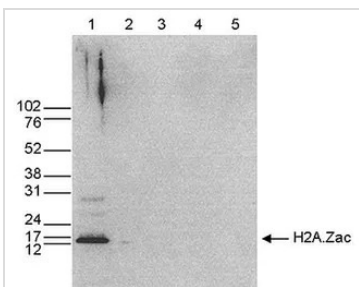
GTX60813 ChIP assay Image

ChIP analysis of sheared chromatin from 10⁶ HeLa cells using GTX60813 Histone H2A.Z (acetyl Lys4/Lys7/Lys11) antibody - ChIP grade. A titration of the antibody consisting of 0.2, 0.5, 1 and 2 µg per ChIP experiment was analysed. IgG (1 µg/IP) was used as negative IP control. Quantitative PCR was performed with primers specific for the promoter of the active genes CCT5 and EIF4A2, used as positive controls, and for the coding region of the inactive MYT1 gene and the Sat2 satellite repeat, used as negative controls. This figure shows the recovery, expressed as a % of input (the relative amount of immunoprecipitated DNA compared to input DNA after qPCR analysis).



GTX60813 ELISA Image

ELISA analysis of peptide containing the histone modifications of interest using GTX60813 Histone H2A.Z (acetyl Lys4/Lys7/Lys11) antibody - ChIP grade.



GTX60813 WB Image

WB analysis of whole cell extracts (25 µg, lane 1) from HeLa cells, and on 1 µg of recombinant histone H2A, H2B, H3 and H4 (lane 2, 3, 4 and 5, respectively) using GTX60813 Histone H2A.Z (acetyl Lys4/Lys7/Lys11) antibody - ChIP grade.

Dilution : 1:1,000



For full product information, images and publications, please visit our [website](#).