

Histone H3K79me1 (Mono-methyl Lys79) antibody - ChIP grade

Cat. No. GTX60821

Host	Rabbit
Clonality	Polyclonal
Isotype	IgG
Applications	WB, Dot, ELISA, ChIP assay
Reactivity	Human

Package
50 µl

Applications

Application Note

*Optimal dilutions/concentrations should be determined by the researcher.

Suggested dilution	Recommended dilution
WB	1:1,000
Dot	1:100,000
ELISA	1:500 - 1:1,000
ChIP assay	5 – 10 µl

Not tested in other applications.

Properties

Form	Liquid
Buffer	Serum
Preservative	0.05% Sodium azide
Storage	Store as concentrated solution. Centrifuge briefly prior to opening vial. For short-term storage (1-2 weeks), store at 4°C. For long-term storage, aliquot and store at -20°C or below. Avoid multiple freeze-thaw cycles.
Immunogen	Histone H3 the monomethylated lysine 79 (H3K79me1), using a KLH-conjugated synthetic peptide.
Purification	Unpurified
Conjugation	Unconjugated

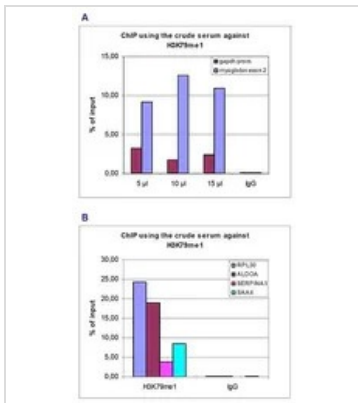
Note

For laboratory research use only. Not for any clinical, therapeutic, or diagnostic use in humans or animals. Not for animal or human consumption.

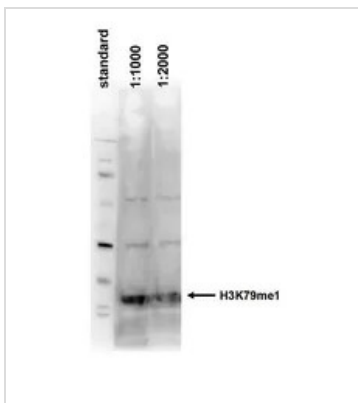
Purchasers shall not, and agree not to enable third parties to, analyze, copy, reverse engineer or otherwise attempt to determine the structure or sequence of the product.



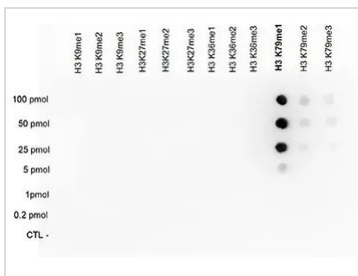
For full product information, images and publications, please visit our [website](#).

DATA IMAGES

GTX60821 ChIP assay Image

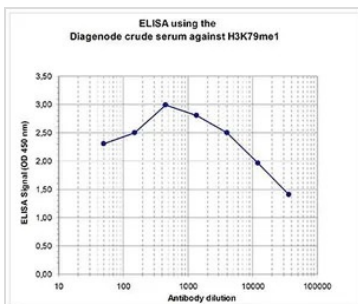
ChIP analysis of sheared chromatin from 5×10^6 HeLa cells using GTX60821 Histone H3K79me1 (Mono-methyl Lys79) antibody - ChIP grade. IgG (5 µg/IP) was used as a negative IP control. The IP'd DNA was analysed by qPCR using primers for different positive and negative loci. The results are expressed as a % of input (the relative amount of immunoprecipitated DNA compared to input DNA after qPCR analysis). Figure 1A: recovery of the GAPDH promoter and myoglobin exon 2 with a titration of the H3K79me1 antibody consisting of 5, 10 and 15 µl per ChIP experiment. Figure 1B: recovery of RPL30, ALDOA, SERPINA1 and SAA4 using 10 µl of antibody per ChIP experiment.


GTX60821 WB Image

WB analysis of histone extracts (15 µg) from HeLa cells using GTX60821 Histone H3K79me1 (Mono-methyl Lys79) antibody - ChIP grade. Dilution: 1:1,000 and 1:2,000


GTX60821 Dot Image

Dot blot analysis of 0.2 - 100 pmol of the peptides containing other modifications of histone H3 using GTX60821 Histone H3K79me1 (Mono-methyl Lys79) antibody - ChIP grade. Dilution: 1:100,000


GTX60821 ELISA Image

ELISA analysis of peptides containing the histone modification of interest using GTX60821 Histone H3K79me1 (Mono-methyl Lys79) antibody - ChIP grade.



For full product information, images and publications, please visit our [website](https://www.genetex.com).