

Histone H4K20me3 (trimethyl Lys20) antibody - CHIP grade

Cat. No. GTX60828

Host	Rabbit
Clonality	Polyclonal
Isotype	IgG
Applications	WB, ICC/IF, Dot, ELISA, ChIP assay, Protein Array
Reactivity	Human, Mouse

Package
50 µg

Applications

Application Note

*Optimal dilutions/concentrations should be determined by the researcher.

Suggested dilution	Recommended dilution
WB	1:1,000
ICC/IF	1:500
Dot	1:20,000/1:10,000
ELISA	1:500
ChIP assay	0.5-5 µg
Protein Array	Assay dependent

Not tested in other applications.

Properties

Form	Liquid
Buffer	PBS
Preservative	0.05% Sodium azide, 0.05% ProClin 300
Storage	Store as concentrated solution. Centrifuge briefly prior to opening vial. For short-term storage (1-2 weeks), store at 4°C. For long-term storage, aliquot and store at -20°C or below. Avoid multiple freeze-thaw cycles.
Concentration	0.94 mg/ml (Please refer to the vial label for the specific concentration.)
Immunogen	The region of histone H4 containing the trimethylated lysine 20 (H4K20me3), using a KLH-conjugated synthetic peptide.
Purification	Purified by affinity chromatography
Conjugation	Unconjugated



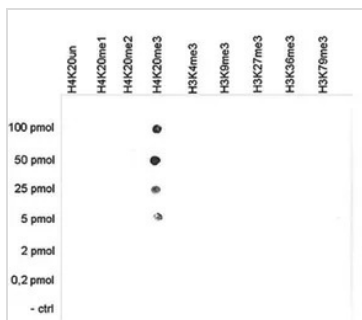
For full product information, images and publications, please visit our [website](#).

For laboratory research use only. Not for any clinical, therapeutic, or diagnostic use in humans or animals. Not for animal or human consumption.

Note

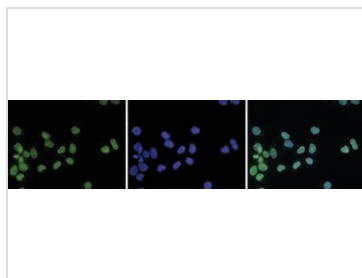
Purchasers shall not, and agree not to enable third parties to, analyze, copy, reverse engineer or otherwise attempt to determine the structure or sequence of the product.

DATA IMAGES



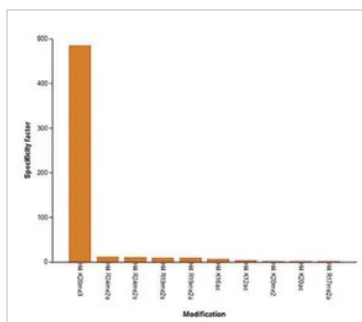
GTX60828 Dot Image

Dot blot analysis of 0.2 - 100 pmol of the peptides containing other histone modifications and the unmodified H4K20 using GTX60828 Histone H4K20me3 (trimethyl Lys20) antibody - ChIP grade.
Dilution : 1:20,000



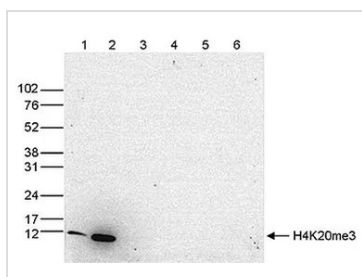
GTX60828 ICC/IF Image

ICC/IF analysis of methanol fixed HeLa cells using GTX60828 Histone H4K20me3 (trimethyl Lys20) antibody - ChIP grade.
Green : Primary antibody
Blue : DAPI
Dilution : 1:500



GTX60828 Protein Array Image

Protein Array analysis of an array containing 384 peptides with different combinations of modifications from histone H3, H4, H2A and H2B using GTX60828 Histone H4K20me3 (trimethyl Lys20) antibody - ChIP grade. This figure shows the specificity factor, calculated as the ratio of the average intensity of all spots containing the mark, divided by the average intensity of all spots not containing the mark.
Dilution : 1:10,000



GTX60828 WB Image

WB analysis of whole cell (25 µg, lane 1) and histone extracts (15 µg, lane 2) from HeLa cells, and on 1 µg of recombinant histone H2A, H2B, H3 and H4 (lane 3, 4, 5 and 6, respectively) using GTX60828 Histone H4K20me3 (trimethyl Lys20) antibody - ChIP grade.
Dilution : 1:1,000



For full product information, images and publications, please visit our [website](#).