

## Histone H4K8ac (acetyl Lys8) antibody - ChIP grade

**Cat. No. GTX60829**

<b>Host</b>	Rabbit
<b>Clonality</b>	Polyclonal
<b>Isotype</b>	IgG
<b>Applications</b>	WB, ICC/IF, Dot, ELISA, ChIP assay
<b>Reactivity</b>	Human, Mouse

**Package**

50 µg

## Applications

**Application Note**

\*Optimal dilutions/concentrations should be determined by the researcher.

Suggested dilution	Recommended dilution
WB	1:200
ICC/IF	1:500
Dot	1:20,000
ELISA	1:100
ChIP assay	1-5 µg

Not tested in other applications.

## Properties

<b>Form</b>	Liquid
<b>Buffer</b>	PBS
<b>Preservative</b>	0.05% Sodium azide, 0.05% ProClin 300
<b>Storage</b>	Store as concentrated solution. Centrifuge briefly prior to opening vial. For short-term storage (1-2 weeks), store at 4°C. For long-term storage, aliquot and store at -20°C or below. Avoid multiple freeze-thaw cycles.
<b>Concentration</b>	1.23 mg/ml (Please refer to the vial label for the specific concentration.)
<b>Immunogen</b>	The region of histone H4 containing the acetylated lysine 8 (H4K8ac), using a KLH-conjugated synthetic peptide.
<b>Purification</b>	Purified by affinity chromatography
<b>Conjugation</b>	Unconjugated

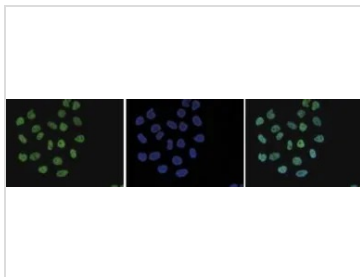
**Note**

For laboratory research use only. Not for any clinical, therapeutic, or diagnostic use in humans or animals. Not for animal or human consumption.

Purchasers shall not, and agree not to enable third parties to, analyze, copy, reverse engineer or otherwise attempt to determine the structure or sequence of the product.



For full product information, images and publications, please visit our [website](#).

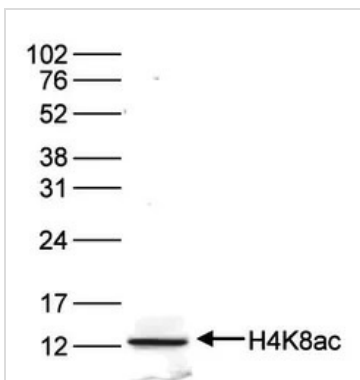
**DATA IMAGES**

**GTx60829 ICC/IF Image**

ICC/IF analysis of 4% paraformaldehyde fixed NIH3T3 cells using GTx60829 Histone H4K8ac (acetyl Lys8) antibody - ChIP grade.

Green : Primary antibody

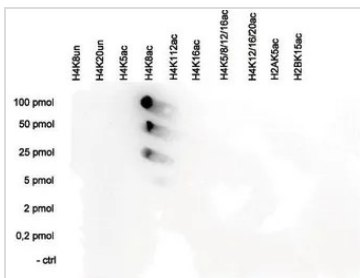
Blue : DAPI

Dilution : 1:500


**GTx60829 WB Image**

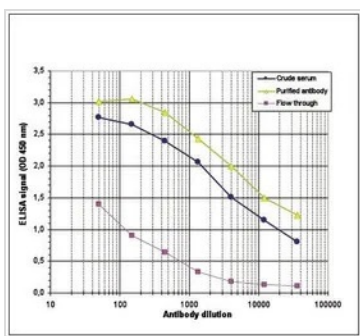
WB analysis of histone extracts (15 µg) from HeLa cells using GTx60829 Histone H4K8ac (acetyl Lys8) antibody - ChIP grade.

Dilution : 1:200


**GTx60829 Dot Image**

Dot blot analysis of 0.2 - 100 pmol of the peptides containing other histone modifications and the unmodified H4K8 using GTx60829 Histone H4K8ac (acetyl Lys8) antibody - ChIP grade.

Dilution : 1:20,000


**GTx60829 ELISA Image**

ELISA analysis of peptide containing the histone modification of interest using GTx60829 Histone H4K8ac (acetyl Lys8) antibody - ChIP grade.



For full product information, images and publications, please visit our [website](http://www.genetex.com).