

pan-HP1 antibody - ChIP grade

Cat. No. GTX60833

Host	Rabbit
Clonality	Polyclonal
Isotype	IgG
Applications	WB, ICC/IF, ChIP assay
Reactivity	Human, Mouse

Package
50 µg

Applications

Application Note

*Optimal dilutions/concentrations should be determined by the researcher.

Suggested dilution	Recommended dilution
WB	1:1,000
ICC/IF	1:500
ChIP assay	4 µg

Not tested in other applications.

Properties

Form	Liquid
Buffer	PBS
Preservative	0.05% Sodium azide, 0.05% ProClin 300
Storage	Store as concentrated solution. Centrifuge briefly prior to opening vial. For short-term storage (1-2 weeks), store at 4°C. For long-term storage, aliquot and store at -20°C or below. Avoid multiple freeze-thaw cycles.
Concentration	2 mg/ml (Please refer to the vial label for the specific concentration.)
Immunogen	Human HP1 β (Heterochromatin protein 1 homolog beta), using the full length recombinant GST tagged protein. The antibody also recognizes the α and γ isoforms.
Purification	Purified by affinity chromatography
Conjugation	Unconjugated

Note

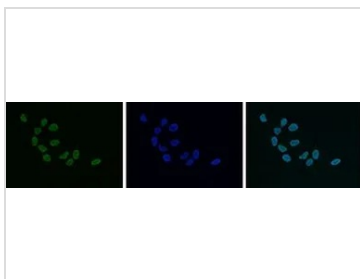
For laboratory research use only. Not for any clinical, therapeutic, or diagnostic use in humans or animals. Not for animal or human consumption.

Purchasers shall not, and agree not to enable third parties to, analyze, copy, reverse engineer or otherwise attempt to determine the structure or sequence of the product.



For full product information, images and publications, please visit our [website](#).

DATA IMAGES



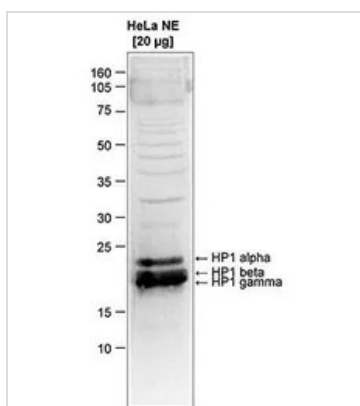
GTX60833 ICC/IF Image

ICC/IF analysis of 4% paraformaldehyde fixed HeLa cells using GTX60833 pan-HP1 antibody - ChIP grade.

Green : Primary antibody

Blue : DAPI

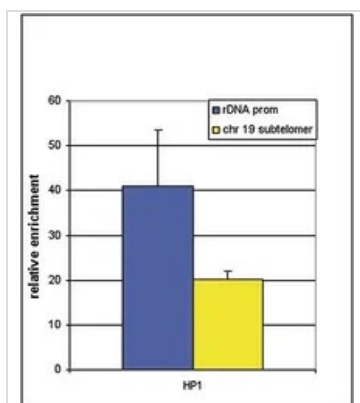
Dilution : 1:500



GTX60833 WB Image

WB analysis of nuclear extracts (20 µg) from HeLa cells using GTX60833 pan-HP1 antibody - ChIP grade.

Dilution : 1:1,000



GTX60833 ChIP assay Image

ChIP analysis of NIH3T3 cells using GTX60833 pan-HP1 antibody - ChIP grade. QPCR was performed on the IP'd DNA with optimized primer sets for the rDNA promoter and for a subtelomeric sequence of chromosome 19. This figure shows the relative enrichment as compared to a no antibody negative control ChIP.

Antibody amount : 4µg



For full product information, images and publications, please visit our [website](https://www.genetex.com).