

# Rtf1 antibody - ChIP grade

**Cat. No. GTX60844**

<b>Host</b>	Rabbit
<b>Clonality</b>	Polyclonal
<b>Isotype</b>	IgG
<b>Applications</b>	WB, ICC/IF, IP, ChIP assay
<b>Reactivity</b>	Drosophila

**Package**  
50 µg

## Applications

### Application Note

\*Optimal dilutions/concentrations should be determined by the researcher.

Suggested dilution	Recommended dilution
WB	1:1,000
ICC/IF	1:50
IP	12 µg
ChIP assay	1 - 5 µg

Not tested in other applications.

**Calculated MW** 80 kDa. ( [Note](#) )

## Properties

<b>Form</b>	Liquid
<b>Buffer</b>	PBS
<b>Preservative</b>	0.05% Sodium azide, 0.05% ProClin 300
<b>Storage</b>	Store as concentrated solution. Centrifuge briefly prior to opening vial. For short-term storage (1-2 weeks), store at 4°C. For long-term storage, aliquot and store at -20°C or below. Avoid multiple freeze-thaw cycles.
<b>Concentration</b>	1.8 mg/ml (Please refer to the vial label for the specific concentration.)
<b>Immunogen</b>	Drosophila Rtf1 (Rtf1, Paf1/RNA polymerase II complex component, homolog), using the full length recombinant protein.
<b>Purification</b>	Protein G purified
<b>Conjugation</b>	Unconjugated

### Note

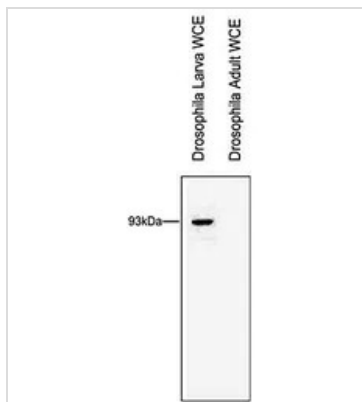
For laboratory research use only. Not for any clinical, therapeutic, or diagnostic use in humans or animals. Not for animal or human consumption.

Purchasers shall not, and agree not to enable third parties to, analyze, copy, reverse engineer or otherwise attempt to determine the structure or sequence of the product.



For full product information, images and publications, please visit our [website](#).

## DATA IMAGES



### GTX60844 WB Image

WB analysis of whole cell extracts (WCE) from drosophila larva and drosophila adults using GTX60844 Rtf1 antibody - ChIP grade.

Dilution : 1:1000



For full product information, images and publications, please visit our [website](https://www.genetex.com).