

Ski3 antibody

Cat. No. GTX60845

Host	Rabbit
Clonality	Polyclonal
Isotype	IgG
Applications	WB, ICC/IF, ChIP assay
Reactivity	Human

Package

75 µg

Applications

Application Note

*Optimal dilutions/concentrations should be determined by the researcher.

Suggested dilution	Recommended dilution
WB	1:100
ICC/IF	1:100
ChIP assay	1 - 5 µg

Not tested in other applications.

Calculated MW 175 kDa. ([Note](#))

Properties

Form	Liquid
Buffer	PBS
Preservative	0.05% Sodium azide, 0.05% ProClin 300
Storage	Store as concentrated solution. Centrifuge briefly prior to opening vial. For short-term storage (1-2 weeks), store at 4°C. For long-term storage, aliquot and store at -20°C or below. Avoid multiple freeze-thaw cycles.
Concentration	3 mg/ml (Please refer to the vial label for the specific concentration.)
Immunogen	Human SKI3, using a recombinant protein.
Purification	Protein G purified
Conjugation	Unconjugated

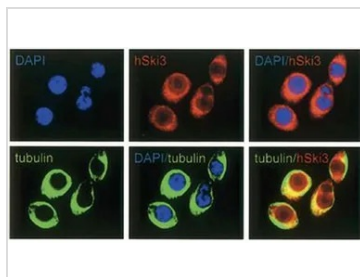
Note

For laboratory research use only. Not for any clinical, therapeutic, or diagnostic use in humans or animals. Not for animal or human consumption.

Purchasers shall not, and agree not to enable third parties to, analyze, copy, reverse engineer or otherwise attempt to determine the structure or sequence of the product.

For full product information, images and publications, please visit our [website](#).

DATA IMAGES



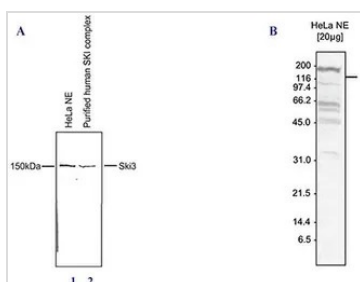
GTx60845 ICC/IF Image

ICC/IF analysis of HeLa cells using GTx60845 Ski3 antibody.

Red : Primary antibody

Green : alpha tubulin antibody

Blue : DAPI



GTx60845 WB Image

WB analysis of HeLa nuclear extracts (lane 1) and the purified human SKI complex (lane 2) (Figure 1A), or nuclear extracts from HeLa cells (HeLa NE, 20 μ g) (Figure 1B) using GTx60845 Ski3 antibody.

Dilution : 1:100



For full product information, images and publications, please visit our [website](https://www.genetex.com).