

## WDR61 antibody - ChIP grade

Cat. No. GTX60846

Host	Rabbit
Clonality	Polyclonal
Isotype	IgG
Applications	WB, ChIP assay
Reactivity	Human, Drosophila

## Package

75 µg

## Applications

## Application Note

\*Optimal dilutions/concentrations should be determined by the researcher.

Suggested dilution	Recommended dilution
WB	1:1,000
ChIP assay	1 - 5 µg

Not tested in other applications.

Calculated MW 34 kDa. ( [Note](#) )

## Properties

Form	Liquid
Buffer	PBS
Preservative	0.05% Sodium azide, 0.05% ProClin 300
Storage	Store as concentrated solution. Centrifuge briefly prior to opening vial. For short-term storage (1-2 weeks), store at 4°C. For long-term storage, aliquot and store at -20°C or below. Avoid multiple freeze-thaw cycles.
Concentration	2.5 mg/ml (Please refer to the vial label for the specific concentration.)
Immunogen	Human SKI8, using a recombinant protein.
Purification	Protein G purified
Conjugation	Unconjugated

## Note

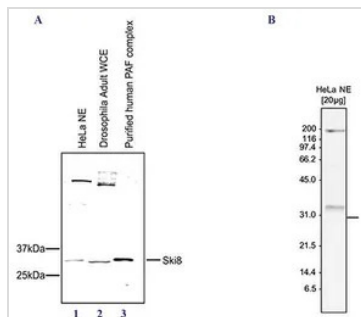
For laboratory research use only. Not for any clinical, therapeutic, or diagnostic use in humans or animals. Not for animal or human consumption.

Purchasers shall not, and agree not to enable third parties to, analyze, copy, reverse engineer or otherwise attempt to determine the structure or sequence of the product.



For full product information, images and publications, please visit our [website](#).

DATA IMAGES



**GTX60846 WB Image**

WB analysis of nuclear extract from HeLa cells (lane 1), Drosophila adult whole cell extracts (lane 2), and the purified human PAF complex (lane 3) (Figure 1A) or on nuclear extracts from HeLa cells (HeLa NE, 20  $\mu$ g) (Figure 1B) using GTX60846 WDR61 antibody - ChIP grade.

Dilution : 1:1,000



For full product information, images and publications, please visit our [website](https://www.genetex.com).