

Rabbit Anti-Mouse IgG2a (kappa Light chain) antibody [RM107]

Cat. No. GTX60854

Host	Rabbit
Clonality	Monoclonal
Isotype	IgG
Applications	WB, FCM, IP, ELISA
Reactivity	Mouse

Package
100 µg

Applications

Application Note

*Optimal dilutions/concentrations should be determined by the researcher.

Suggested dilution	Recommended dilution
WB	0.1 µg/mL - 0.5 µg/mL
FCM	Assay dependent
IP	Assay dependent
ELISA	0.005 µg/mL - 0.2 µg/mL

Not tested in other applications.

Product Note

This antibody reacts to the Fab region of mouse IgG2a κ . No cross reactivity with mouse IgG2a λ , IgG1, IgG3, IgM, IgA, IgE, human IgG, rat IgG, or goat IgG. The Fc region of RM107 has been engineered to eliminate Fc receptor binding.

Properties

Form	Liquid
Buffer	PBS, 1% BSA, 50% Glycerol
Preservative	0.09% Sodium azide
Storage	Store as concentrated solution. Centrifuge briefly prior to opening vial. For short-term storage (1-2 weeks), store at 4°C. For long-term storage, aliquot and store at -20°C or below. Avoid multiple freeze-thaw cycles.
Concentration	Batch dependent (Please refer to the vial label for the specific concentration.)
Immunogen	Mouse IgG
Purification	Protein A purified From tissue culture supernatant
Conjugation	Unconjugated



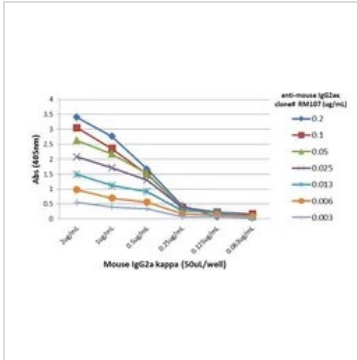
For full product information, images and publications, please visit our [website](#).

For laboratory research use only. Not for any clinical, therapeutic, or diagnostic use in humans or animals. Not for animal or human consumption.

Note

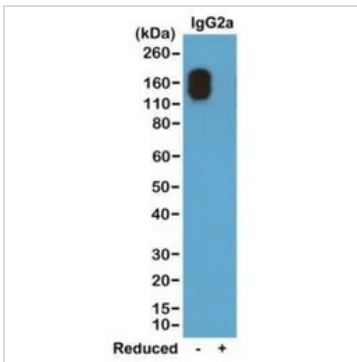
Purchasers shall not, and agree not to enable third parties to, analyze, copy, reverse engineer or otherwise attempt to determine the structure or sequence of the product.

DATA IMAGES



GTx60854 ELISA Image

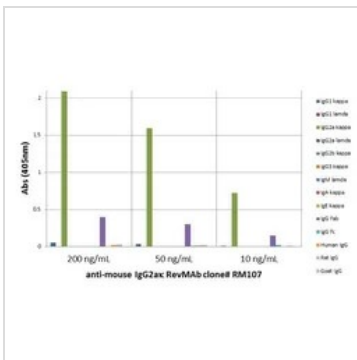
ELISA analysis of different amount of immunogen proteins using serial diluted GTx60854 Rabbit Anti-Mouse IgG2a (kappa Light chain) antibody [RM107].



GTx60854 WB Image

WB analysis of nonreduced(-) and reduced(+) mouse IgG2aκ (20 ng/lane) using GTx60854 Rabbit Anti-Mouse IgG2a (kappa Light chain) antibody [RM107].

Dilution : 0.2μg/ml



GTx60854 ELISA Image

ELISA analysis of mouse immunoglobulins (50 ng/well) using GTx60854 Rabbit Anti-Mouse IgG2a (kappa Light chain) antibody [RM107]. No cross reactivity with IgG2aλ, IgG1, IgG3, IgM, IgA, IgE, human IgG, rat IgG, or goat IgG.

Dilution : 200 ng/mL, 50 ng/mL, or 10 ng/mL of RM107 was used as the primary antibody.



For full product information, images and publications, please visit our [website](https://www.genetex.com).