

Rabbit Anti-Mouse IgG2b (Fc) antibody [RM108]

Cat. No. GTX60855

Host	Rabbit
Clonality	Monoclonal
Isotype	IgG
Applications	WB, FCM, IP, ELISA
Reactivity	Mouse

Package
100 µg

Applications

Application Note

*Optimal dilutions/concentrations should be determined by the researcher.

Suggested dilution	Recommended dilution
WB	0.1 µg/mL - 0.5 µg/mL
FCM	Assay dependent
IP	Assay dependent
ELISA	0.005 µg/mL - 0.2 µg/mL

Not tested in other applications.

Product Note

This antibody reacts to the Fc region of mouse IgG2b. No cross reactivity with mouse IgG1, IgG2a, IgG3, IgM, IgA, IgE, human IgG, rat IgG, or goat IgG. The Fc region of RM108 has been engineered to eliminate Fc receptor binding.

Properties

Form	Liquid
Buffer	PBS, 1% BSA, 50% Glycerol
Preservative	0.09% Sodium azide
Storage	Store as concentrated solution. Centrifuge briefly prior to opening vial. For short-term storage (1-2 weeks), store at 4°C. For long-term storage, aliquot and store at -20°C or below. Avoid multiple freeze-thaw cycles.
Concentration	Batch dependent (Please refer to the vial label for the specific concentration.)
Immunogen	Mouse IgG2b
Purification	Protein A purified From tissue culture supernatant
Conjugation	Unconjugated



For full product information, images and publications, please visit our [website](#).

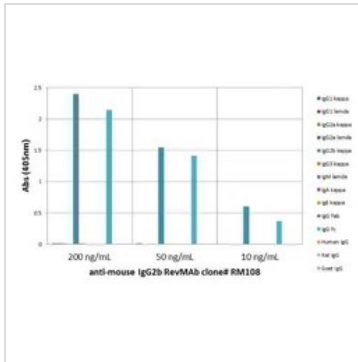
Date 2026 / 01 / 31 Page 1 of 2

For laboratory research use only. Not for any clinical, therapeutic, or diagnostic use in humans or animals. Not for animal or human consumption.

Note

Purchasers shall not, and agree not to enable third parties to, analyze, copy, reverse engineer or otherwise attempt to determine the structure or sequence of the product.

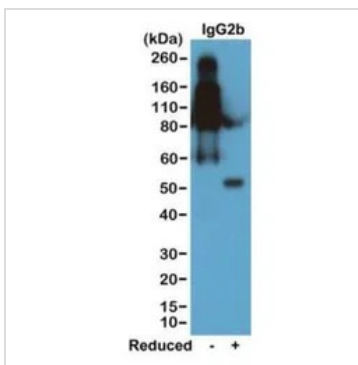
DATA IMAGES



GTX60855 ELISA Image

ELISA analysis of mouse immunoglobulins (50 ng/well) using GTX60855 Rabbit Anti-Mouse IgG2b (Fc) antibody [RM108]. No cross reactivity with IgG1, IgG2a, IgG3, IgM, IgA, IgE, human IgG, rat IgG, or goat IgG.

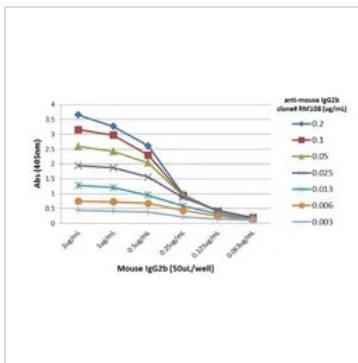
Dilution : 200 ng/mL, 50 ng/mL, or 10 ng/mL of RM108 was used as the primary antibody.



GTX60855 WB Image

WB analysis of nonreduced(-) and reduced(+) mouse IgG2b (20ng/lane) using GTX60855 Rabbit Anti-Mouse IgG2b (Fc) antibody [RM108].

Dilution : 0.2µg/ml



GTX60855 ELISA Image

ELISA analysis of different amount of immunogen proteins using serial diluted GTX60855 Rabbit Anti-Mouse IgG2b (Fc) antibody [RM108].



For full product information, images and publications, please visit our [website](https://www.genetex.com).