

Rabbit Anti-Mouse kappa Light chain antibody [RM103]

Cat. No. GTX60858

Host	Rabbit
Clonality	Monoclonal
Isotype	IgG
Applications	WB, FCM, IP, ELISA
Reactivity	Mouse

Package
100 µg

Applications

Application Note

*Optimal dilutions/concentrations should be determined by the researcher.

Suggested dilution	Recommended dilution
WB	0.1µg/mL - 0.5µg/mL
FCM	Assay dependent
IP	Assay dependent
ELISA	0.005µg/mL - 0.2µg/mL

Not tested in other applications.

Product Note

This antibody reacts to the kappa light chain of mouse immunoglobulins. No cross reactivity with the lamda light chain, human IgG, rat IgG, or goat IgG. The Fc region of RM103 has been engineered to eliminate Fc receptor binding.

Properties

Form	Liquid
Buffer	PBS, 1% BSA, 50% Glycerol
Preservative	0.09% Sodium azide
Storage	Store as concentrated solution. Centrifuge briefly prior to opening vial. For short-term storage (1-2 weeks), store at 4°C. For long-term storage, aliquot and store at -20°C or below. Avoid multiple freeze-thaw cycles.
Concentration	Batch dependent (Please refer to the vial label for the specific concentration.)
Immunogen	Mouse IgG
Purification	Protein A purified From tissue culture supernatant
Conjugation	Unconjugated



For full product information, images and publications, please visit our [website](#).

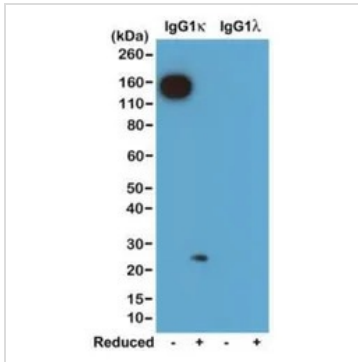
Date 2026 / 02 / 01 Page 1 of 2

For laboratory research use only. Not for any clinical, therapeutic, or diagnostic use in humans or animals. Not for animal or human consumption.

Note

Purchasers shall not, and agree not to enable third parties to, analyze, copy, reverse engineer or otherwise attempt to determine the structure or sequence of the product.

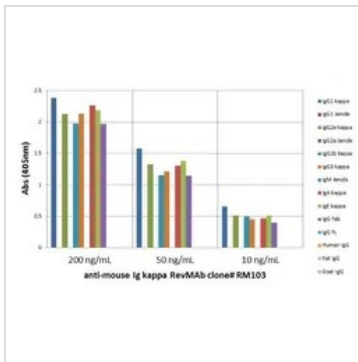
DATA IMAGES



GTX60858 WB Image

WB analysis of nonreduced(-) and reduced(+) mouse IgG1κ and IgG1λ (20ng/lane) using GTX60858 Rabbit Anti-Mouse kappa Light chain antibody [RM103].

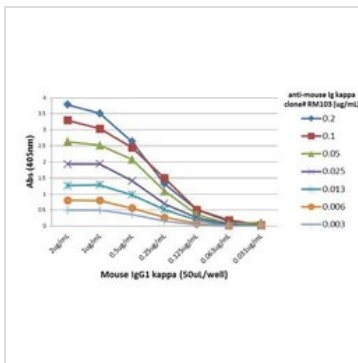
Dilution : 0.2μg/ml



GTX60858 ELISA Image

ELISA analysis of mouse immunoglobulins (50 ng/well) using GTX60858 Rabbit Anti-Mouse kappa Light chain antibody [RM103]. No cross reactivity with the lamda lightchain, human IgG (κ+λ), rat IgG (κ+λ), or goat IgG (κ+λ).

Dilution : 200 ng/mL, 50 ng/mL, or 10 ng/mL of RM103 was used as the primary antibody



GTX60858 ELISA Image

ELISA analysis of different amount of immunogen proteins using serial diluted GTX60858 Rabbit Anti-Mouse kappa Light chain antibody [RM103].



For full product information, images and publications, please visit our [website](https://www.genetex.com).