

## PEG (methoxy group) antibody [RM105]

Cat. No. GTX60859

Host	Rabbit
Clonality	Monoclonal
Isotype	IgG
Applications	WB, ICC/IF, IHC-P, FCM, IP, ELISA, IHC
Reactivity	Species independent

Package  
100 µg

## Applications

## Application Note

\*Optimal dilutions/concentrations should be determined by the researcher.

Suggested dilution	Recommended dilution
WB	0.05 µg/mL - 1 µg/mL
ICC/IF	Assay dependent
IHC-P	0.5 µg/mL - 2 µg/mL
FCM	Assay dependent
IP	Assay dependent
ELISA	0.01 µg/mL - 0.3 µg/mL
IHC	0.5 µg/mL - 2 µg/mL

Not tested in other applications.

**Product Note** This antibody reacts to the methoxy group of Polyethylene glycol (PEG). It is specific for methoxypolyethylene glycol.

## Properties

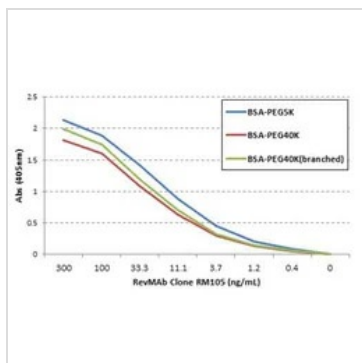
Form	Liquid
Buffer	PBS, 1% BSA, 50% Glycerol
Preservative	0.09% Sodium azide
Storage	Store as concentrated solution. Centrifuge briefly prior to opening vial. For short-term storage (1-2 weeks), store at 4°C. For long-term storage, aliquot and store at -20°C or below. Avoid multiple freeze-thaw cycles.
Concentration	Batch dependent (Please refer to the vial label for the specific concentration.)
Immunogen	KLH-PEG with terminal methoxy group
Purification	Protein A purified From tissue culture supernatant
Conjugation	Unconjugated

For full product information, images and publications, please visit our [website](#).

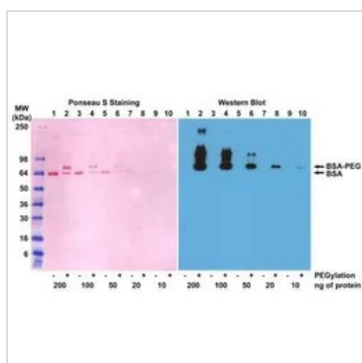
For laboratory research use only. Not for any clinical, therapeutic, or diagnostic use in humans or animals. Not for animal or human consumption.

**Note**

Purchasers shall not, and agree not to enable third parties to, analyze, copy, reverse engineer or otherwise attempt to determine the structure or sequence of the product.

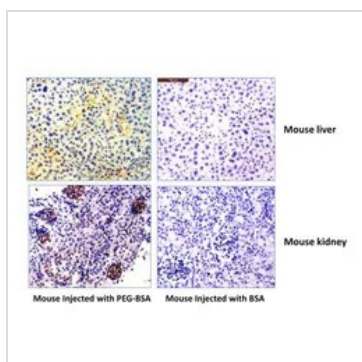
**DATA IMAGES**

**GTx60859 ELISA Image**

ELISA analysis of three different PEGylated BSAs using GTx60859 PEG (methoxy group) antibody [RM105].


**GTx60859 WB Image**

WB analysis of BSA and PEGylated BSA (mPEG 5 kDa) lysates using GTx60859 PEG (methoxy group) antibody [RM105].

Dilution : 0.1µg/ml


**GTx60859 IHC Image**

IHC analysis of mouse liver and kidney tissue using GTx60859 PEG (methoxy group) antibody [RM105].

Dilution : 0.5µg/ml



For full product information, images and publications, please visit our [website](https://www.genetex.com).