

Phosphothreonine antibody [RM102]

Cat. No. GTX60860

Host	Rabbit
Clonality	Monoclonal
Isotype	IgG
Applications	WB, ICC/IF, FCM, IP, ELISA, IHC
Reactivity	Species independent

Package
100 µg

Applications

Application Note

*Optimal dilutions/concentrations should be determined by the researcher.

Suggested dilution	Recommended dilution
WB	1:500 - 1:2000
ICC/IF	1:100 - 1:500
FCM	Assay dependent
IP	1:100 - 1:500
ELISA	Assay dependent
IHC	1:100 - 1:500

Not tested in other applications.

Product Note

This antibody reacts threonine-phosphorylated proteins. No cross reactivity with nonphosphorylated threonine, phosphoserine, and phosphotyrosine. It shows slight cross-reactivity with a few phospho-serine-containing peptides.

Properties

Form	Liquid
Buffer	PBS, 1% BSA, 50% Glycerol
Preservative	0.09% Sodium azide
Storage	Store as concentrated solution. Centrifuge briefly prior to opening vial. For short-term storage (1-2 weeks), store at 4°C. For long-term storage, aliquot and store at -20°C or below. Avoid multiple freeze-thaw cycles.
Concentration	Batch dependent (Please refer to the vial label for the specific concentration.)
Immunogen	Mixture of phosphothreonine-BSA conjugate and a phosphothreonine containing peptide
Purification	Protein A purified From tissue culture supernatant
Conjugation	Unconjugated



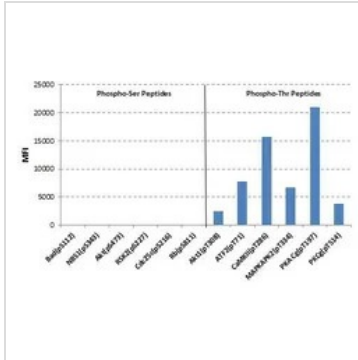
For full product information, images and publications, please visit our [website](#).

Date 2026 / 02 / 01 Page 1 of 2

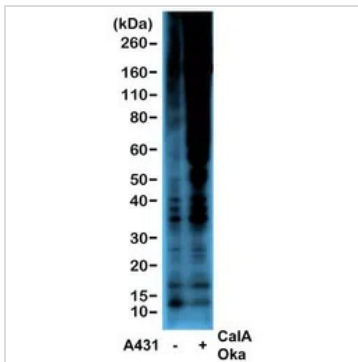
For laboratory research use only. Not for any clinical, therapeutic, or diagnostic use in humans or animals. Not for animal or human consumption.

Note

Purchasers shall not, and agree not to enable third parties to, analyze, copy, reverse engineer or otherwise attempt to determine the structure or sequence of the product.

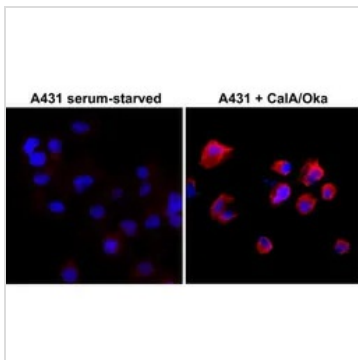
DATA IMAGES

GTX60860 Image

GTX60860 recognizes Phosphorylated threonine in peptides with different sequences. It has minimal cross-reactivity with phosphorylated serine.


GTX60860 WB Image

WB analysis of serum-starved A431 cells non-treated or treated with Calyculin A/Okadaic Acid lysates using GTX60860 Phosphothreonine antibody [RM102].

Dilution : 1:2000


GTX60860 ICC/IF Image

ICC/IF analysis of A431 cells nontreated or treated with Calyculin A/Okadaic Acid using GTX60860 Phosphothreonine antibody [RM102].

Red : Primary antibody

Blue : DAPI

Dilution : 1:500



For full product information, images and publications, please visit our [website](https://www.genetex.com).