

Rabbit Anti-Human IgG (Fc) antibody [RM116]

Cat. No. GTX60861

Host	Rabbit
Clonality	Monoclonal
Isotype	IgG
Applications	WB, ICC/IF, IHC-P, FCM, ELISA, IHC, Sandwich ELISA
Reactivity	Human, Monkey

Package
100 µg

Applications

Application Note

*Optimal dilutions/concentrations should be determined by the researcher.

Suggested dilution	Recommended dilution
WB	Assay dependent
ICC/IF	0.5µg/mL - 2µg/mL
IHC-P	0.5µg/mL - 2µg/mL
FCM	Assay dependent
ELISA	50ng/well - 200ng/well (for Capture) ; 0.05µg/mL - 0.2µg/mL (for Detection)
IHC	0.5µg/mL - 2µg/mL
Sandwich ELISA	Assay dependent

Note : Capture : GTX60861, Detection : GTX60920

Not tested in other applications.

Product Note

This antibody reacts to the Fc region of all gamma heavy chains of human immunoglobulins, including $\gamma 1$, $\gamma 2$, $\gamma 3$, and $\gamma 4$. No cross reactivity with human IgM, IgA, IgD, IgE, mouse IgG, rat IgG, or goat IgG.

Properties

Form	Liquid
Buffer	PBS, 1% BSA, 50% Glycerol
Preservative	0.09% Sodium azide
Storage	Store as concentrated solution. Centrifuge briefly prior to opening vial. For short-term storage (1-2 weeks), store at 4°C. For long-term storage, aliquot and store at -20°C or below. Avoid multiple freeze-thaw cycles.
Concentration	Batch dependent (Please refer to the vial label for the specific concentration.)
Immunogen	Human IgG



For full product information, images and publications, please visit our [website](#).

Purification

Protein A purified
From tissue culture supernatant

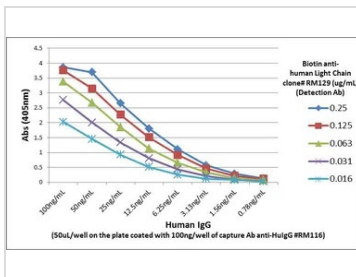
Conjugation

Unconjugated

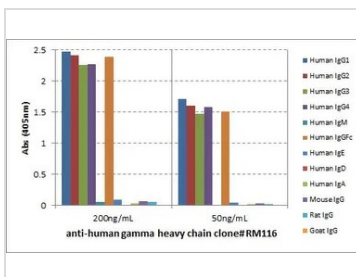
Note

For laboratory research use only. Not for any clinical, therapeutic, or diagnostic use in humans or animals. Not for animal or human consumption.

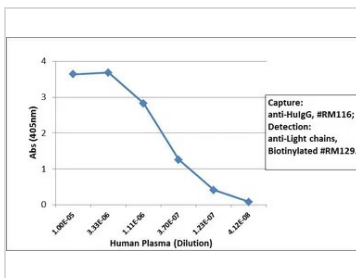
Purchasers shall not, and agree not to enable third parties to, analyze, copy, reverse engineer or otherwise attempt to determine the structure or sequence of the product.

DATA IMAGES

GTX60861 ELISA Image

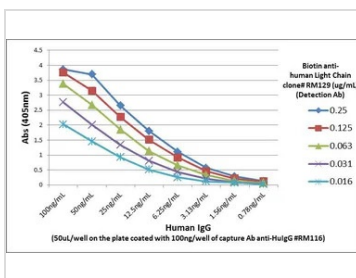
Sandwich ELISA analysis of different amount of human IgG using serial diluted GTX60920 Human Ig Light Chains antibody [RM129] (Biotin) as the detection antibody and GTX60861 Human IgG (Fc) antibody [RM116] as the capture antibody.


GTX60861 ELISA Image

ELISA analysis of human immunoglobulins (50 ng/well) using GTX60861 Human IgG (Fc) antibody [RM116]. No cross reactivity with other human heavy chains, mouse IgG, rat IgG, or goat IgG. Dilution : 200 ng/mL or 50 ng/mL of RM116 was used as the primary antibody.


GTX60861 ELISA Image

Sandwich ELISA analysis of human plasma using GTX60861 Human IgG (Fc) antibody [RM116] as the capture antibody (100ng/well) and GTX60920 Human Ig Light Chains antibody [RM129] (Biotin)(1 ug/mL) as the detection antibody.


GTX60861 ELISA Image

Sandwich ELISA analysis of human IgG using GTX60861 Human IgG (Fc) antibody [RM116] as the capture antibody (100ng/well) and GTX60920 Human Ig Light Chains antibody [RM129] (Biotin)(1 ug/mL) as the detection antibody.



For full product information, images and publications, please visit our [website](https://www.genetex.com).