

Rabbit Anti-Human IgG1 antibody [RM117]

Cat. No. GTX60862

Host	Rabbit
Clonality	Monoclonal
Isotype	IgG
Applications	WB, ICC/IF, IHC-P, FCM, ELISA, Sandwich ELISA
Reactivity	Human

Package
100 µg

Applications

Application Note

*Optimal dilutions/concentrations should be determined by the researcher.

Suggested dilution	Recommended dilution
WB	Assay dependent
ICC/IF	0.5µg/mL - 2µg/mL
IHC-P	0.5µg/mL - 2µg/mL
FCM	Assay dependent
ELISA	50ng/well - 200ng/well (for Capture) ; 0.05µg/mL - 0.2µg/mL (for Detection)
Sandwich ELISA	Assay dependent

Note : Capture : GTX60862, Detection : GTX60920

Not tested in other applications.

Product Note

This antibody reacts to the heavy chain of human IgG1. RM117 does not cross react to any other IgG subclasses (IgG2, IgG3, or IgG4), and shows no cross reactivity to IgM, IgA, IgD, IgE. RM117 does not react to monkey (Cyno or Rhesus) IgG, mouse IgG, rat IgG, or goat IgG.

Properties

Form	Liquid
Buffer	PBS, 1% BSA, 50% Glycerol
Preservative	0.09% Sodium azide
Storage	Store as concentrated solution. Centrifuge briefly prior to opening vial. For short-term storage (1-2 weeks), store at 4°C. For long-term storage, aliquot and store at -20°C or below. Avoid multiple freeze-thaw cycles.
Concentration	Batch dependent (Please refer to the vial label for the specific concentration.)
Immunogen	Peptide corresponding to the hinge region of Human IgG1
Purification	Protein A purified From tissue culture supernatant



For full product information, images and publications, please visit our [website](https://www.genetex.com).

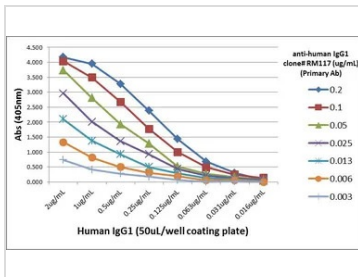
Conjugation

Unconjugated

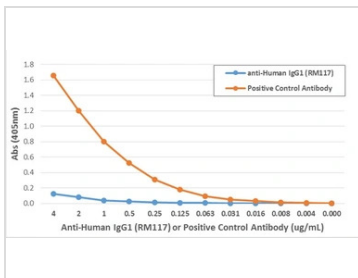
For laboratory research use only. Not for any clinical, therapeutic, or diagnostic use in humans or animals. Not for animal or human consumption.

Note

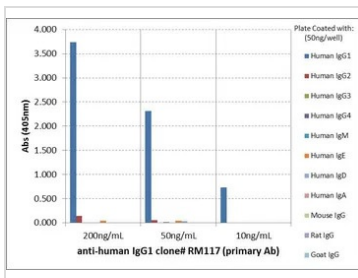
Purchasers shall not, and agree not to enable third parties to, analyze, copy, reverse engineer or otherwise attempt to determine the structure or sequence of the product.

DATA IMAGES

GTx60862 ELISA Image

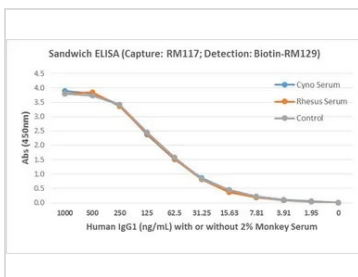
ELISA analysis of different amount of immunogen proteins using serial diluted GTx60862 Human IgG1 antibody [RM117].


GTx60862 ELISA Image

ELISA analysis of monkey IgG using GTx60862 Human IgG1 antibody [RM117] and positive control Anti-monkey IgG antibody. The result shows that the GTx60862 does not react to monkey IgG.


GTx60862 ELISA Image

ELISA analysis of human IgG1 using GTx60862 Human IgG1 antibody [RM117]. No cross reactivity to IgM, IgA, IgD, IgE, mouse IgG, rat IgG, or goat IgG.


GTx60862 ELISA Image

Sandwich ELISA analysis of human IgG1 in monkey serum using GTx60862 Human IgG1 antibody [RM117] as the capture antibody and GTx60920 Human Ig Light Chains antibody [RM129] (Biotin) as the detection antibody.



For full product information, images and publications, please visit our [website](http://www.genetex.com).