

Rabbit Anti-Human IgG4 antibody [RM120]

Cat. No. GTX60865

Host	Rabbit
Clonality	Monoclonal
Isotype	IgG
Applications	WB, ICC/IF, IHC-P, FCM, ELISA, Sandwich ELISA
Reactivity	Human

Package
100 µg

Applications

Application Note

*Optimal dilutions/concentrations should be determined by the researcher.

Suggested dilution	Recommended dilution
WB	0.5 µg/mL - 2 µg/mL
ICC/IF	1 µg/mL - 10µg/mL
IHC-P	1 µg/mL - 10µg/mL
FCM	Assay dependent
ELISA	50ng/well - 200ng/well (for Capture) ; 0.05µg/mL - 0.2µg/mL (for Detection)
Sandwich ELISA	Assay dependent

Note : Capture : GTX60865, Detection : GTX60920

Not tested in other applications.

Product Note

This antibody reacts to the heavy chain of human IgG4, RM120 does not cross react to any other IgG subclasses (IgG1, IgG2, or IgG3), and shows no cross reactivity to IgM, IgA, IgD, IgE. RM120 does not react to monkey (Cyno or Rhesus) IgG, mouse IgG, rat IgG, or goat IgG.

Properties

Form	Liquid
Buffer	PBS, 1% BSA, 50% Glycerol
Preservative	0.09% Sodium azide
Storage	Store as concentrated solution. Centrifuge briefly prior to opening vial. For short-term storage (1-2 weeks), store at 4°C. For long-term storage, aliquot and store at -20°C or below. Avoid multiple freeze-thaw cycles.
Concentration	Batch dependent (Please refer to the vial label for the specific concentration.)
Immunogen	Peptide corresponding to the hinge region of Human IgG4
Purification	Protein A purified From tissue culture supernatant



For full product information, images and publications, please visit our [website](#).

Date 2025 / 05 / 11 Page 1 of 2

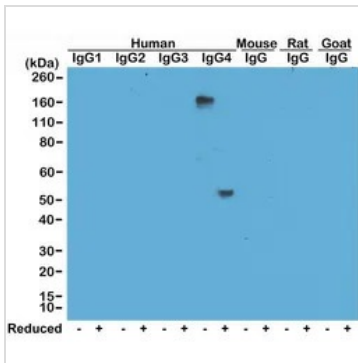
Conjugation

Unconjugated

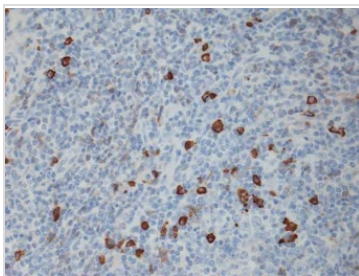
Note

For laboratory research use only. Not for any clinical, therapeutic, or diagnostic use in humans or animals. Not for animal or human consumption.

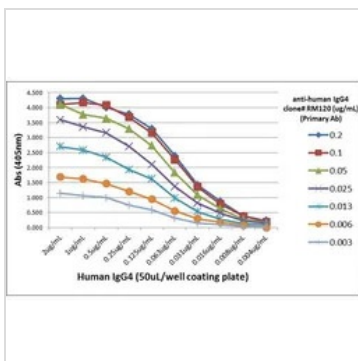
Purchasers shall not, and agree not to enable third parties to, analyze, copy, reverse engineer or otherwise attempt to determine the structure or sequence of the product.

DATA IMAGES

GTX60865 WB Image

WB analysis of human IgG4, in both whole molecule (~150kDa, non-reduced) and heavy chain (~50kDa, reduced) forms using GTX60865 Human IgG4 antibody [RM120]. No cross reactivity with other isotypes of human IgG, or mouse, rat, or goat IgG.


GTX60865 IHC-P Image

IHC-P analysis of tonsil tissue using GTX60865 Human IgG4 antibody [RM120].
Dilution : 1:50,000


GTX60865 ELISA Image

ELISA analysis of different amount of immunogen proteins using serial diluted GTX60865 Human IgG4 antibody [RM120].



For full product information, images and publications, please visit our [website](https://www.genetex.com).