

Rabbit Anti-Human IgM antibody [RM121]

Cat. No. GTX60866

Host	Rabbit
Clonality	Monoclonal
Isotype	IgG
Applications	WB, ICC/IF, IHC-P, FCM, ELISA, Sandwich ELISA
Reactivity	Human

Package
100 µg

Applications

Application Note

*Optimal dilutions/concentrations should be determined by the researcher.

Suggested dilution	Recommended dilution
WB	Assay dependent
ICC/IF	0.5µg/mL - 2µg/mL
IHC-P	0.5µg/mL - 2µg/mL
FCM	Assay dependent
ELISA	50ng/well - 200ng/well (for Capture) ; 0.05µg/mL - 0.2µg/mL (for Detection)
Sandwich ELISA	Assay dependent

Note : Capture : GTX60866, Detection : GTX60920

Not tested in other applications.

Product Note This antibody reacts to the heavy chain of human IgM. No cross reactivity with human IgG, IgA, IgD, or IgE.

Properties

Form	Liquid
Buffer	PBS, 1% BSA, 50% Glycerol
Preservative	0.09% Sodium azide
Storage	Store as concentrated solution. Centrifuge briefly prior to opening vial. For short-term storage (1-2 weeks), store at 4°C. For long-term storage, aliquot and store at -20°C or below. Avoid multiple freeze-thaw cycles.
Concentration	Batch dependent (Please refer to the vial label for the specific concentration.)
Immunogen	Human IgM
Purification	Protein A purified From tissue culture supernatant
Conjugation	Unconjugated

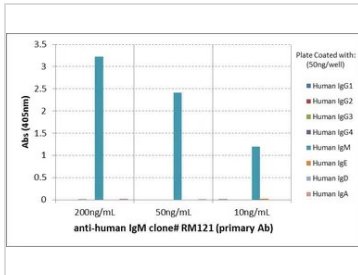
For full product information, images and publications, please visit our [website](#).

For laboratory research use only. Not for any clinical, therapeutic, or diagnostic use in humans or animals. Not for animal or human consumption.

Note

Purchasers shall not, and agree not to enable third parties to, analyze, copy, reverse engineer or otherwise attempt to determine the structure or sequence of the product.

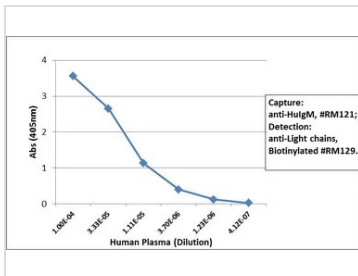
DATA IMAGES



GTX60866 ELISA Image

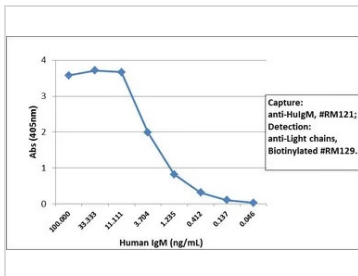
ELISA analysis of human immunoglobulins (50 ng/well) using serial diluted GTX60866 Human IgM antibody [RM121]. No cross reactivity with Human IgG, IgE, IgD, or IgA.

Dilution : 200 ng/mL, 50 ng/mL of RM121 was used as the primary antibody.



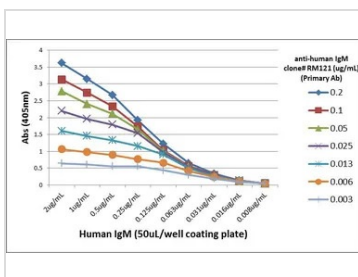
GTX60866 ELISA Image

Sandwich ELISA analysis of human plasma using GTX60866 Human IgM antibody [RM121] as the capture antibody (100ng/well) and GTX60920 Human Ig Light Chains antibody [RM129] (Biotin) as the detection antibody.



GTX60866 ELISA Image

Sandwich ELISA analysis of human IgM using GTX60866 Human IgM antibody [RM121] as the capture antibody (100ng/well) and GTX60920 Human Ig Light Chains antibody [RM129] (Biotin) as the detection antibody.



GTX60866 ELISA Image

ELISA analysis of different amount of immunogen proteins using serial diluted GTX60866 Human IgM antibody [RM121].



For full product information, images and publications, please visit our [website](https://www.genetex.com).