

Rabbit Anti-Human IgE antibody [RM122]

Cat. No. GTX60867

Host	Rabbit
Clonality	Monoclonal
Isotype	IgG
Applications	WB, FCM, ELISA, Sandwich ELISA
Reactivity	Human

Package
100 µg

Applications

Application Note

*Optimal dilutions/concentrations should be determined by the researcher.

Suggested dilution	Recommended dilution
WB	Assay dependent
FCM	Assay dependent
ELISA	10ng/well - 100ng/well (for Capture) ; 0.01µg/mL - 0.1µg/mL (for Detection)
Sandwich ELISA	Assay dependent

Note : Capture : GTX60867, Detection : GTX60920

Not tested in other applications.

Product Note This antibody reacts to human IgE. No cross reactivity with human IgG, IgM, IgD, or IgA.

Properties

Form	Liquid
Buffer	PBS, 1% BSA, 50% Glycerol
Preservative	0.09% Sodium azide
Storage	Store as concentrated solution. Centrifuge briefly prior to opening vial. For short-term storage (1-2 weeks), store at 4°C. For long-term storage, aliquot and store at -20°C or below. Avoid multiple freeze-thaw cycles.
Concentration	Batch dependent (Please refer to the vial label for the specific concentration.)
Immunogen	Human IgE
Purification	Protein A purified From tissue culture supernatant
Conjugation	Unconjugated

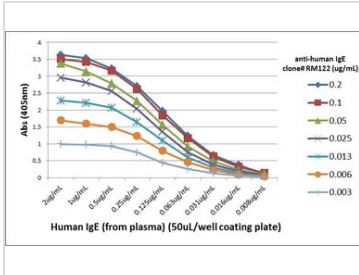


For full product information, images and publications, please visit our [website](#).

For laboratory research use only. Not for any clinical, therapeutic, or diagnostic use in humans or animals. Not for animal or human consumption.

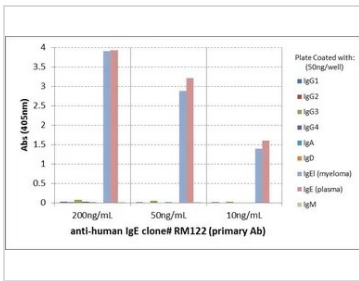
Note
 Purchasers shall not, and agree not to enable third parties to, analyze, copy, reverse engineer or otherwise attempt to determine the structure or sequence of the product.

DATA IMAGES



GTX60867 ELISA Image

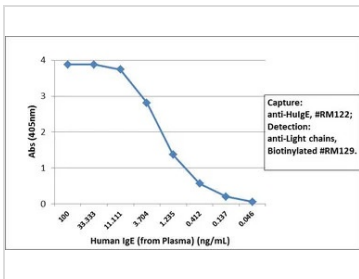
ELISA analysis of different amount of immunogen proteins using serial diluted GTX60867 Human IgE antibody [RM122].



GTX60867 ELISA Image

ELISA analysis of human immunoglobulins (50 ng/well) using GTX60867 Human IgE antibody [RM122]. No cross reactivity with Human IgG, IgM, IgD, or IgA.

Dilution : 200 ng/mL, 50 ng/mL or 10 ng/mL of RM122 was used as the primary antibody.



GTX60867 ELISA Image

Sandwich ELISA analysis of human IgE using GTX60867 Human IgE antibody [RM122] as the capture antibody (25ng/well) and GTX60920 Human Ig Light Chains antibody [RM129] (Biotin) as the detection antibody.



For full product information, images and publications, please visit our [website](#).