

Rabbit Anti-Human IgD antibody [RM123]

Cat. No. GTX60868

| | |
|---------------------|--|
| Host | Rabbit |
| Clonality | Monoclonal |
| Isotype | IgG |
| Applications | WB, ICC/IF, IHC-P, FCM, ELISA, IHC, Sandwich ELISA |
| Reactivity | Human |

Package
100 µg

Applications

Application Note

*Optimal dilutions/concentrations should be determined by the researcher.

| Suggested dilution | Recommended dilution |
|--------------------|---|
| WB | Assay dependent |
| ICC/IF | 0.5µg/mL - 2µg/mL |
| IHC-P | 0.5µg/mL - 2µg/mL |
| FCM | Assay dependent |
| ELISA | 25ng/well - 200ng/well (for Capture) ; 0.01µg/mL - 0.1µg/mL (for Detection) |
| IHC | 0.5µg/mL - 2µg/mL |
| Sandwich ELISA | Assay dependent |

Note : Capture : GTX60868, Detection : GTX60920

Not tested in other applications.

Product Note This antibody reacts to human IgD. No cross reactivity with human IgG, IgM, IgE, or IgA.

Properties

| | |
|----------------------|--|
| Form | Liquid |
| Buffer | PBS, 1% BSA, 50% Glycerol |
| Preservative | 0.09% Sodium azide |
| Storage | Store as concentrated solution. Centrifuge briefly prior to opening vial. For short-term storage (1-2 weeks), store at 4°C. For long-term storage, aliquot and store at -20°C or below. Avoid multiple freeze-thaw cycles. |
| Concentration | Batch dependent (Please refer to the vial label for the specific concentration.) |
| Immunogen | Human IgD |
| Purification | Protein A purified From tissue culture supernatant |



For full product information, images and publications, please visit our [website](#).

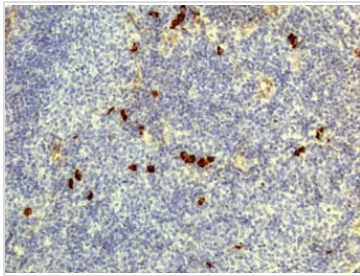
Conjugation

Unconjugated

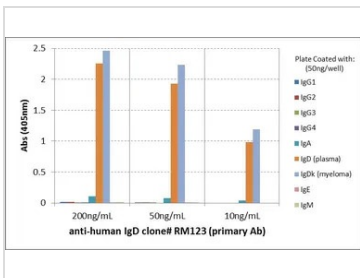
Note

For laboratory research use only. Not for any clinical, therapeutic, or diagnostic use in humans or animals. Not for animal or human consumption.

Purchasers shall not, and agree not to enable third parties to, analyze, copy, reverse engineer or otherwise attempt to determine the structure or sequence of the product.

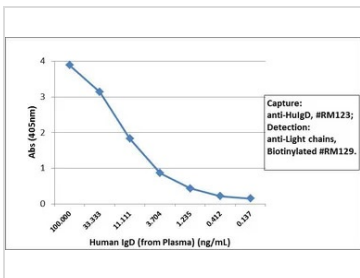
DATA IMAGES

GTx60868 IHC Image

IHC analysis of human lymphoid tissue using GTx60868 Human IgD antibody [RM123].

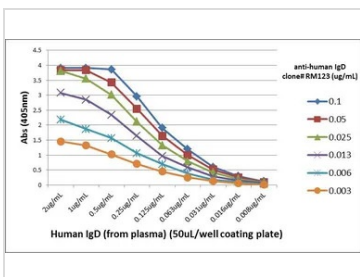

GTx60868 ELISA Image

ELISA analysis of human immunoglobulins (50 ng/well) using GTx60868 Human IgD antibody [RM123]. No cross reactivity with human IgG, IgM, IgA, or IgE.

Dilution : 200 ng/mL, 50ng/mL, or 10 ng/mL of RM123 was used as the primary antibody.


GTx60868 ELISA Image

Sandwich ELISA analysis of human IgD using GTx60868 Human IgD antibody [RM123] as the capture antibody (100ng/well) and GTx60920 Human Ig Light Chains antibody [RM129] (Biotin) as the detection antibody.


GTx60868 ELISA Image

ELISA analysis of different amount of immunogen proteins using serial diluted GTx60868 Human IgD antibody [RM123].



For full product information, images and publications, please visit our [website](http://www.genetex.com).