

## Rabbit Anti-Human IgA1 antibody [RM124]

Cat. No. GTX60869

Host	Rabbit
Clonality	Monoclonal
Isotype	IgG
Applications	WB, ICC/IF, IHC-P, FCM, ELISA, IHC, Sandwich ELISA
Reactivity	Human

Package  
100 µg

## Applications

## Application Note

\*Optimal dilutions/concentrations should be determined by the researcher.

Suggested dilution	Recommended dilution
WB	Assay dependent
ICC/IF	0.5µg/mL - 2µg/mL
IHC-P	0.1µg/mL - 1µg/mL
FCM	Assay dependent
ELISA	50ng/well - 200ng/well (for Capture) ; 0.05µg/mL - 0.2µg/mL (for Detection)
IHC	0.1µg/mL - 1µg/mL
Sandwich ELISA	Assay dependent

**Note : Capture : GTX60869, Detection : GTX60920**

Not tested in other applications.

**Product Note** This antibody reacts with IgA2. No cross reactivity with human IgG, IgM, IgD, or IgE.

## Properties

Form	Liquid
Buffer	PBS, 1% BSA, 50% Glycerol
Preservative	0.09% Sodium azide
Storage	Store as concentrated solution. Centrifuge briefly prior to opening vial. For short-term storage (1-2 weeks), store at 4°C. For long-term storage, aliquot and store at -20°C or below. Avoid multiple freeze-thaw cycles.
Concentration	Batch dependent (Please refer to the vial label for the specific concentration.)
Immunogen	Human IgA
Purification	Protein A purified From tissue culture supernatant

For full product information, images and publications, please visit our [website](#).

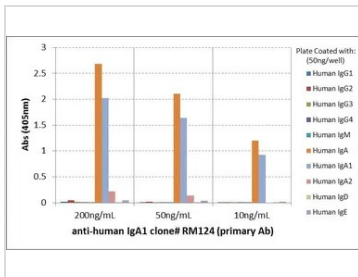
**Conjugation**

Unconjugated

For laboratory research use only. Not for any clinical, therapeutic, or diagnostic use in humans or animals. Not for animal or human consumption.

**Note**

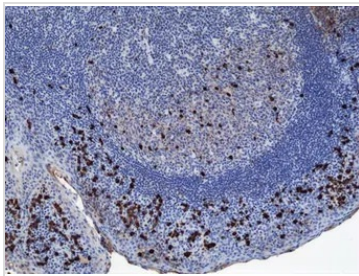
Purchasers shall not, and agree not to enable third parties to, analyze, copy, reverse engineer or otherwise attempt to determine the structure or sequence of the product.

**DATA IMAGES**

**GTX60869 ELISA Image**

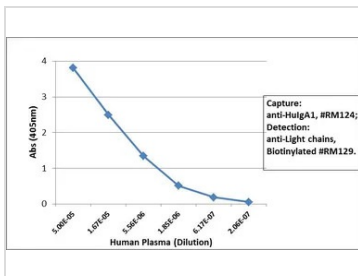
ELISA analysis of human immunoglobulins (50 ng/well) using GTX60869 Human IgA1 antibody [RM124].

No cross reactivity with Human IgG, IgM, IgD, or IgE.

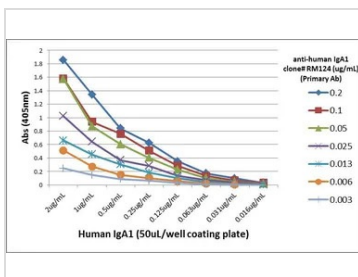
Dilution : 200 ng/mL, 50 ng/mL, or 10 ng/mL of RM124 was used as the primary antibody.


**GTX60869 IHC Image**

IHC analysis of human tonsil tissue using GTX60869 Human IgA1 antibody [RM124].


**GTX60869 ELISA Image**

Sandwich ELISA analysis of human plasma using GTX60869 Human IgA1 antibody [RM124] as the capture antibody (100ng/well) and GTX60920 Human Ig Light Chains antibody [RM129] (Biotin) as the detection antibody.


**GTX60869 ELISA Image**

ELISA analysis of different amount of immunogen proteins using serial diluted GTX60869 Human IgA1 antibody [RM124].



For full product information, images and publications, please visit our [website](https://www.genetex.com).