

# Rabbit Anti-Human IgA2 antibody [RM125]

**Cat. No. GTX60870**

<b>Host</b>	Rabbit
<b>Clonality</b>	Monoclonal
<b>Isotype</b>	IgG
<b>Applications</b>	WB, ICC/IF, IHC-P, FCM, ELISA, IHC, Sandwich ELISA
<b>Reactivity</b>	Human

**Package**  
100 µg

## Applications

### Application Note

\*Optimal dilutions/concentrations should be determined by the researcher.

Suggested dilution	Recommended dilution
WB	Assay dependent
ICC/IF	0.5µg/mL - 2µg/mL
IHC-P	0.1µg/mL - 1µg/mL
FCM	Assay dependent
ELISA	50ng/well - 200ng/well (for Capture) ; 0.05µg/mL - 0.2µg/mL (for Detection)
IHC	0.1µg/mL - 1µg/mL
Sandwich ELISA	Assay dependent

**Note : Capture : GTX60870, Detection : GTX60920**

Not tested in other applications.

**Product Note** This antibody reacts to human IgA2. No cross reactivity with human IgA1, IgG, IgM, IgD, or IgE.

## Properties

<b>Form</b>	Liquid
<b>Buffer</b>	PBS, 1% BSA, 50% Glycerol
<b>Preservative</b>	0.09% Sodium azide
<b>Storage</b>	Store as concentrated solution. Centrifuge briefly prior to opening vial. For short-term storage (1-2 weeks), store at 4°C. For long-term storage, aliquot and store at -20°C or below. Avoid multiple freeze-thaw cycles.
<b>Concentration</b>	Batch dependent (Please refer to the vial label for the specific concentration.)
<b>Immunogen</b>	Human IgA2
<b>Purification</b>	Protein A purified From tissue culture supernatant



For full product information, images and publications, please visit our [website](#).

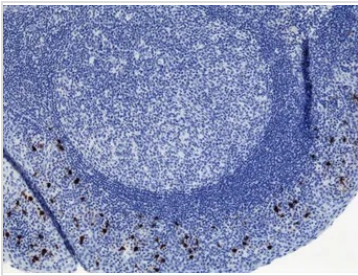
**Conjugation**

Unconjugated

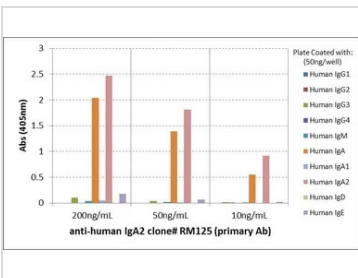
**Note**

For laboratory research use only. Not for any clinical, therapeutic, or diagnostic use in humans or animals. Not for animal or human consumption.

Purchasers shall not, and agree not to enable third parties to, analyze, copy, reverse engineer or otherwise attempt to determine the structure or sequence of the product.

**DATA IMAGES**

**GTX60870 IHC Image**

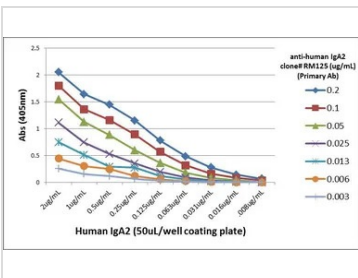
IHC analysis of human tonsil tissue using GTX60870 Human IgA2 antibody [RM125].


**GTX60870 ELISA Image**

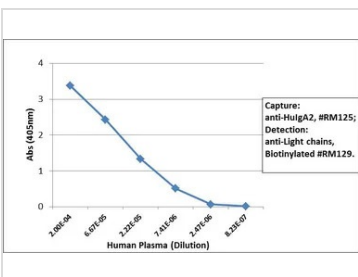
ELISA analysis of human immunoglobulins (50 ng/well) using GTX60870 Human IgA2 antibody [RM125].

No cross reactivity with Human IgA1, IgG, IgM, IgD, or IgE.

Dilution : 200 ng/mL, 50 ng/mL, or 10 ng/mL of RM125 was used as the primary antibody.


**GTX60870 ELISA Image**

ELISA analysis of different amount of immunogen proteins using serial diluted GTX60870 Human IgA2 antibody [RM125].


**GTX60870 ELISA Image**

Sandwich ELISA analysis of human plasma using GTX60870 Human IgA2 antibody [RM125] as the capture antibody (100ng/well) and GTX60920 Human Ig Light Chains antibody [RM129] (Biotin) as the detection antibody.



For full product information, images and publications, please visit our [website](https://www.genetex.com).