

Rabbit Anti-Human kappa light chain antibody [RM126]

Cat. No. GTX60871

Host	Rabbit
Clonality	Monoclonal
Isotype	IgG
Applications	WB, ICC/IF, IHC-P, FCM, ELISA
Reactivity	Human

Package
100 µg

Applications

Application Note

*Optimal dilutions/concentrations should be determined by the researcher.

Suggested dilution	Recommended dilution
WB	Assay dependent
ICC/IF	0.5µg/mL - 2µg/mL
IHC-P	0.5µg/mL - 2µg/mL
FCM	Assay dependent
ELISA	0.05µg/mL - 0.2µg/mL

Not tested in other applications.

Product Note

This antibody reacts to the kappa light chain of human immunoglobulins, and does not react to the lambda light chain. RM126 does not react to monkey (Cyno or Rhesus) IgG, mouse IgG, rat IgG, or goat IgG.

Properties

Form	Liquid
Buffer	PBS, 1% BSA, 50% Glycerol
Preservative	0.09% Sodium azide
Storage	Store as concentrated solution. Centrifuge briefly prior to opening vial. For short-term storage (1-2 weeks), store at 4°C. For long-term storage, aliquot and store at -20°C or below. Avoid multiple freeze-thaw cycles.
Concentration	Batch dependent (Please refer to the vial label for the specific concentration.)
Immunogen	Human IgG
Purification	Protein A purified From tissue culture supernatant
Conjugation	Unconjugated



For full product information, images and publications, please visit our [website](#).

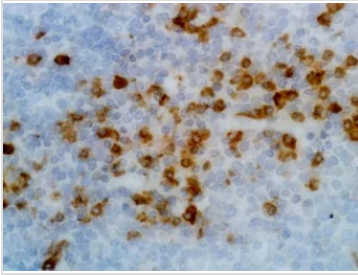
Date 2026 / 01 / 29 Page 1 of 2

For laboratory research use only. Not for any clinical, therapeutic, or diagnostic use in humans or animals. Not for animal or human consumption.

Note

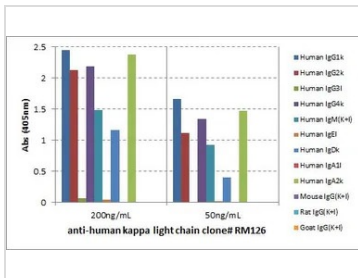
Purchasers shall not, and agree not to enable third parties to, analyze, copy, reverse engineer or otherwise attempt to determine the structure or sequence of the product.

DATA IMAGES



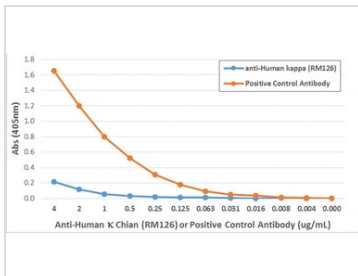
GTX60871 IHC-P Image

IHC-P analysis of human tonsil tissue using GTX60871 Human Kappa Light Chain antibody [RM126].



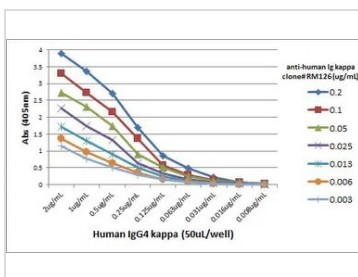
GTX60871 ELISA Image

ELISA analysis of human immunoglobulins using GTX60871 Human Kappa Light Chain antibody [RM126].



GTX60871 ELISA Image

ELISA analysis of monkey IgG using GTX60871 Human Kappa Light Chain antibody [RM126] and positive control Anti-monkey IgG antibody. The result shows that the GTX60871 does not react to monkey IgG.



GTX60871 ELISA Image

ELISA analysis of different amount of immunogen proteins using serial diluted GTX60871 Human Kappa Light Chain antibody [RM126].



For full product information, images and publications, please visit our [website](#).