

## Rabbit Anti-Human lambda light chain antibody [RM127]

**Cat. No. GTX60872**

<b>Host</b>	Rabbit
<b>Clonality</b>	Monoclonal
<b>Isotype</b>	IgG
<b>Applications</b>	WB, ICC/IF, IHC-P, FCM, ELISA
<b>Reactivity</b>	Human

**Package**  
100 µg

## Applications

**Application Note**

\*Optimal dilutions/concentrations should be determined by the researcher.

Suggested dilution	Recommended dilution
WB	Assay dependent
ICC/IF	0.5µg/mL - 2µg/mL
IHC-P	0.5µg/mL - 2µg/mL
FCM	Assay dependent
ELISA	0.05µg/mL - 0.2µg/mL

Not tested in other applications.

**Product Note**

This antibody reacts to the lambda light chain of human immunoglobulins, and does not react to the kappa light chain. RM127 does not react to monkey (Cyno or Rhesus) IgG, mouse IgG, rat IgG, or goat IgG.

## Properties

<b>Form</b>	Liquid
<b>Buffer</b>	PBS, 1% BSA, 50% Glycerol
<b>Preservative</b>	0.09% Sodium azide
<b>Storage</b>	Store as concentrated solution. Centrifuge briefly prior to opening vial. For short-term storage (1-2 weeks), store at 4°C. For long-term storage, aliquot and store at -20°C or below. Avoid multiple freeze-thaw cycles.
<b>Concentration</b>	Batch dependent (Please refer to the vial label for the specific concentration.)
<b>Immunogen</b>	Human IgG
<b>Purification</b>	Protein A purified From tissue culture supernatant
<b>Conjugation</b>	Unconjugated



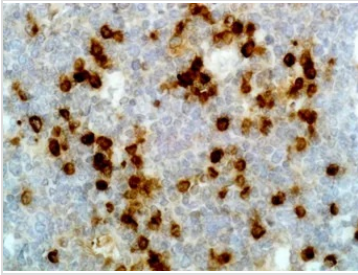
For full product information, images and publications, please visit our [website](#).

Date 2026 / 01 / 30 Page 1 of 2

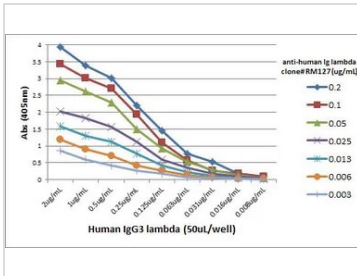
For laboratory research use only. Not for any clinical, therapeutic, or diagnostic use in humans or animals. Not for animal or human consumption.

**Note**

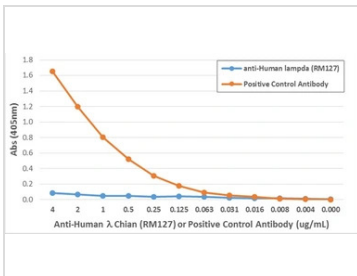
Purchasers shall not, and agree not to enable third parties to, analyze, copy, reverse engineer or otherwise attempt to determine the structure or sequence of the product.

**DATA IMAGES**

**GTX60872 IHC-P Image**

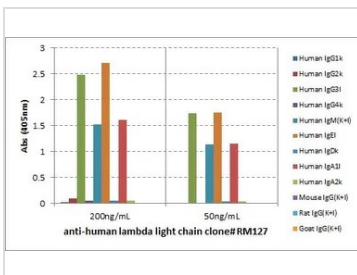
IHC-P analysis of human tonsil tissue using GTX60872 Human Lambda Light Chain antibody [RM127].


**GTX60872 ELISA Image**

ELISA analysis of different amount of immunogen proteins using serially diluted GTX60872 Human Lambda Light Chain antibody [RM127].


**GTX60872 ELISA Image**

ELISA analysis of monkey IgG using GTX60872 Human Lambda Light Chain antibody [RM127] and positive control Anti-monkey IgG antibody. The result shows that the GTX60872 does not react to monkey IgG.


**GTX60872 ELISA Image**

ELISA analysis of human immunoglobulins using GTX60872 Human Lambda Light Chain antibody [RM127].



For full product information, images and publications, please visit our [website](http://www.genetex.com).