

Rabbit Anti-Human IgA antibody [RM128]

Cat. No. GTX60873

Host	Rabbit
Clonality	Monoclonal
Isotype	IgG
Applications	WB, ICC/IF, ELISA, IHC, Sandwich ELISA
Reactivity	Human

Package
100 µg

Applications

Application Note

*Optimal dilutions/concentrations should be determined by the researcher.

Suggested dilution	Recommended dilution
WB	Assay dependent
ICC/IF	0.5µg/mL - 2µg/mL
ELISA	50ng/well - 200ng/well (for Capture) ; 0.05µg/mL - 0.2µg/mL (for Detection)
IHC	0.1µg/mL - 1µg/mL
Sandwich ELISA	Assay dependent

Note : Capture : GTX60873, Detection : GTX60920

Not tested in other applications.

Product Note This antibody reacts to human IgA, including both IgA1 and IgA2. No cross reactivity with human IgG, IgM, IgD, or IgE.

Properties

Form	Liquid
Buffer	PBS, 1% BSA, 50% Glycerol
Preservative	0.09% Sodium azide
Storage	Store as concentrated solution. Centrifuge briefly prior to opening vial. For short-term storage (1-2 weeks), store at 4°C. For long-term storage, aliquot and store at -20°C or below. Avoid multiple freeze-thaw cycles.
Concentration	Batch dependent (Please refer to the vial label for the specific concentration.)
Immunogen	Human IgA
Purification	Protein A purified From tissue culture supernatant
Conjugation	Unconjugated

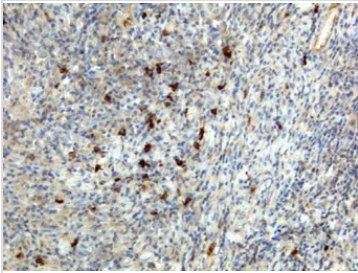
For full product information, images and publications, please visit our [website](#).

Date 2026 / 01 / 28 Page 1 of 2

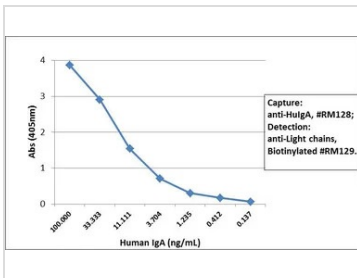
For laboratory research use only. Not for any clinical, therapeutic, or diagnostic use in humans or animals. Not for animal or human consumption.

Note

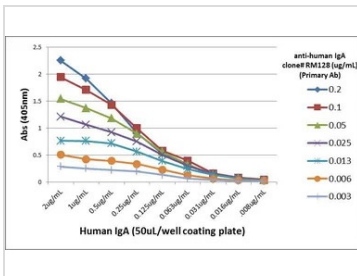
Purchasers shall not, and agree not to enable third parties to, analyze, copy, reverse engineer or otherwise attempt to determine the structure or sequence of the product.

DATA IMAGES

GTX60873 IHC Image

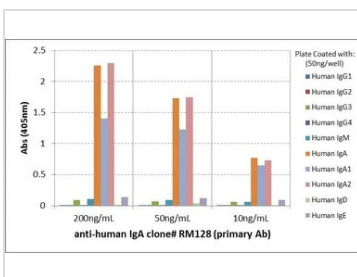
IHC analysis of human lymphoid tissue using GTX60873 Human IgA antibody [RM128].


GTX60873 ELISA Image

Sandwich ELISA analysis of human IgA using GTX60873 Human IgA antibody [RM128] as the capture antibody (100ng/well) and GTX60920 Human Ig Light Chains antibody [RM129] (Biotin) as the detection antibody.


GTX60873 ELISA Image

ELISA analysis of different amount of immunogen proteins using serial diluted GTX60873 Human IgA antibody [RM128].


GTX60873 ELISA Image

ELISA analysis of human immunoglobulins (50 ng/well) using GTX60873 Human IgA antibody [RM128]. No cross reactivity with Human IgG, IgM, IgD, or IgE.

Dilution : 200 ng/mL, 50 ng/mL, or 10 ng/mL of RM128 was used as the primary antibody.



For full product information, images and publications, please visit our [website](https://www.genetex.com).