

Histone H3K4me3 (Tri-methyl Lys4) antibody [RM137]

Cat. No. GTX60876

Host	Rabbit
Clonality	Monoclonal
Isotype	IgG
Applications	WB, Dot, ELISA
Reactivity	Human

Package
100 µg

Applications

Application Note

*Optimal dilutions/concentrations should be determined by the researcher.

Suggested dilution	Recommended dilution
WB	0.2 µg/mL - 1 µg/mL
Dot	Assay dependent
ELISA	0.1 µg/mL - 0.5 µg/mL

Not tested in other applications.

Product Note

This antibody reacts to Histone H3 trimethylated at Lysine 4 (K4me3). No cross reactivity with monomethylated Lysine 4 (K4me1), dimethylated Lysine 4 (K4me2), or other methylations in histone H3.

Properties

Form	Liquid
Buffer	PBS, 1% BSA, 50% Glycerol
Preservative	0.09% Sodium azide
Storage	Store as concentrated solution. Centrifuge briefly prior to opening vial. For short-term storage (1-2 weeks), store at 4°C. For long-term storage, aliquot and store at -20°C or below. Avoid multiple freeze-thaw cycles.
Concentration	Batch dependent (Please refer to the vial label for the specific concentration.)
Immunogen	A trimethyl-peptide corresponding to Trimethyl-Histone H3 (Lys4).
Purification	Protein A purified From tissue culture supernatant
Conjugation	Unconjugated



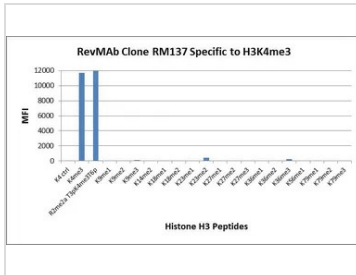
For full product information, images and publications, please visit our [website](#).

Date 2025 / 12 / 12 Page 1 of 2

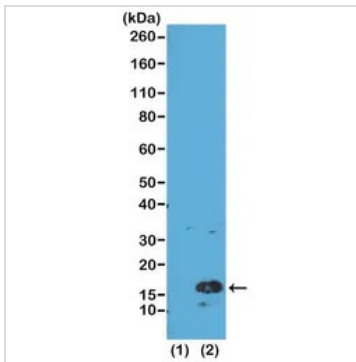
For laboratory research use only. Not for any clinical, therapeutic, or diagnostic use in humans or animals. Not for animal or human consumption.

Note

Purchasers shall not, and agree not to enable third parties to, analyze, copy, reverse engineer or otherwise attempt to determine the structure or sequence of the product.

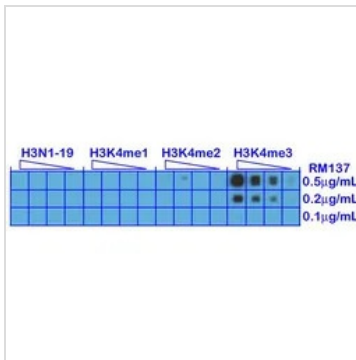
DATA IMAGES

GTx60876 Image

The GTx60876 reacts to Histone H3 trimethylated at Lysine 4 (K4me3). No cross reactivity with other methylated lysines in Histone H3.


GTx60876 WB Image

WB analysis of recombinant histone H3.3 (1) and acid extracts of HeLa cells (2) using GTx60876 Histone H3K4me3 (Tri-methyl Lys4) antibody [RM137].

Dilution : 0.5µg/ml


GTx60876 Dot Image

Dot blot analysis of various peptides using GTx60876 Histone H3K4me3 (Tri-methyl Lys4) antibody [RM137]. No cross reactivity with nonmodified Lysine 4 (H3N1-19), monomethylated Lysine 4 (K4me1) or dimethylated Lysine 4 (K4me2).



For full product information, images and publications, please visit our [website](http://www.genetex.com).