

## Histone H3K4me1 (Mono-methyl Lys4) antibody [RM140]

Cat. No. GTX60878

Host	Rabbit
Clonality	Monoclonal
Isotype	IgG
Application	WB, ICC/IF, ELISA, ChIP assay
Reactivity	Human

Package  
100 µg

## APPLICATION

## Application Note

\*Optimal dilutions/concentrations should be determined by the researcher.

Suggested dilution	Recommended dilution
WB	0.2 µg/mL - 1 µg/mL
ICC/IF	1 µg/mL - 2 µg/mL
ELISA	0.2 µg/mL - 1 µg/mL
ChIP assay	2 µg/mL - 10 µg/mL

Not tested in other applications.

## Product Note

This antibody reacts to Histone H3 monomethylated at Lysine 4 (K4me1). No cross reactivity with dimethylated Lysine 4 (K4me2), trimethylated Lysine 4 (K4me3), or other methylations in histone H3

## PROPERTIES

Form	Liquid
Buffer	PBS, 1% BSA, 50% Glycerol
Preservative	0.09% Sodium azide
Storage	Store as concentrated solution. Centrifuge briefly prior to opening vial. For short-term storage (1-2 weeks), store at 4°C. For long-term storage, aliquot and store at -20°C or below. Avoid multiple freeze-thaw cycles.
Concentration	Batch dependent (Please refer to the vial label for the specific concentration.)
Immunogen	A monomethyl-peptide corresponding to Monomethyl-Histone H3 (Lys4)
Purification	Protein A purified From tissue culture supernatant
Conjugation	Unconjugated

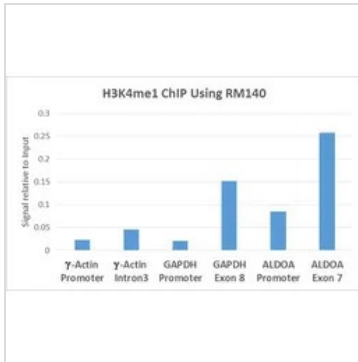


For full product information, images and publications, please visit our [website](#).

For laboratory research use only. Not for any clinical, therapeutic, or diagnostic use in humans or animals. Not for animal or human consumption.

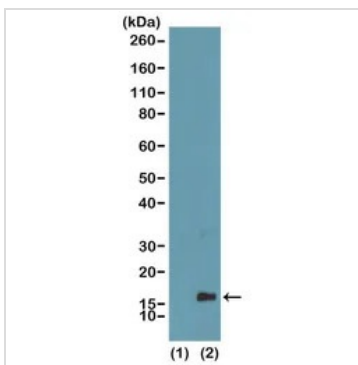
**Note**

Purchasers shall not, and agree not to enable third parties to, analyze, copy, reverse engineer or otherwise attempt to determine the structure or sequence of the product.

**DATA IMAGES**

**GTx60878 ChIP assay Image**

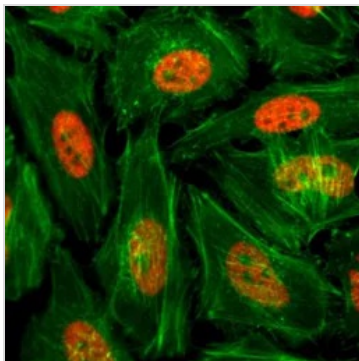
ChIP analysis of HeLa cells using GTx60878 Histone H3K4me1 (Mono-methyl Lys4) antibody [RM140]. Real-time PCR was performed using primers specific to the gene indicated.

Antibody amount : 5μg


**GTx60878 WB Image**

WB analysis of recombinant histone H3.3 (1) and acid extracts of HeLa cells (2) using GTx60878 Histone H3K4me1 (Mono-methyl Lys4) antibody [RM140].

Dilution : 0.5μg/ml


**GTx60878 ICC/IF Image**

ICC/IF analysis of HeLa cells treated with sodium butyrate using GTx60878 Histone H3K4me1 (Mono-methyl Lys4) antibody [RM140].

Red : Primary antibody

Green : Actin



For full product information, images and publications, please visit our [website](#).