

# Histone H3K36me2 (Di-methyl Lys36) antibody [RM141]

**Cat. No. GTX60879**

<b>Host</b>	Rabbit
<b>Clonality</b>	Monoclonal
<b>Isotype</b>	IgG
<b>Applications</b>	WB, ELISA
<b>Reactivity</b>	Human

**Package**  
100 µg

## Applications

### Application Note

\*Optimal dilutions/concentrations should be determined by the researcher.

Suggested dilution	Recommended dilution
WB	0.5 µg/mL - 2 µg/mL
ELISA	0.2 µg/mL - 1 µg/mL

Not tested in other applications.

### Product Note

This antibody reacts to Histone H3 dimethylated at Lysine 36 (K36me2). No cross reactivity with monomethylated Lysine 36 (K36me1), trimethylated Lysine 36 (K36me3), or other methylations in histone H3.

## Properties

<b>Form</b>	Liquid
<b>Buffer</b>	PBS, 1% BSA, 50% Glycerol
<b>Preservative</b>	0.09% Sodium azide
<b>Storage</b>	Store as concentrated solution. Centrifuge briefly prior to opening vial. For short-term storage (1-2 weeks), store at 4°C. For long-term storage, aliquot and store at -20°C or below. Avoid multiple freeze-thaw cycles.
<b>Concentration</b>	Batch dependent (Please refer to the vial label for the specific concentration.)
<b>Immunogen</b>	A dimethyl-peptide corresponding to Dimethyl-Histone H3 (Lys36).
<b>Purification</b>	Protein A purified From tissue culture supernatant
<b>Conjugation</b>	Unconjugated

### Note

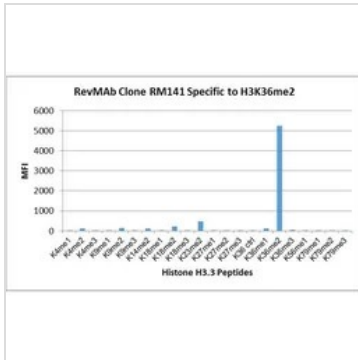
For laboratory research use only. Not for any clinical, therapeutic, or diagnostic use in humans or animals. Not for animal or human consumption.

Purchasers shall not, and agree not to enable third parties to, analyze, copy, reverse engineer or otherwise attempt to determine the structure or sequence of the product.



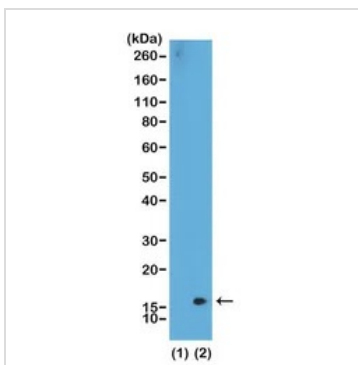
For full product information, images and publications, please visit our [website](#).

DATA IMAGES



**GTx60879 Image**

The GTx60879 reacts to Histone H3 dimethylated at Lysine 36 (K36me2). No cross reactivity with non-modified Lysine 36 (K36 Ctrl), monomethylated Lysine 36 (K36me1), trimethylated Lysine 36 (K36me3), or other methylations in Histone H3.



**GTx60879 WB Image**

WB analysis of recombinant histone H3.3 (1) and acid extracts of HeLa cells (2) using GTx60879 Histone H3K36me2 (Di-methyl Lys36) antibody [RM141].

Dilution : 0.5µg/ml



For full product information, images and publications, please visit our [website](https://www.genetex.com).