

Histone H3K36me3 (Tri-methyl Lys36) antibody [RM155]

Cat. No. GTX60882

Host	Rabbit
Clonality	Monoclonal
Isotype	IgG
Application	WB, ELISA, ChIP assay
Reactivity	Human

Package
100 µg

APPLICATION

Application Note

*Optimal dilutions/concentrations should be determined by the researcher.

Suggested dilution	Recommended dilution
WB	0.5 µg/mL - 2 µg/mL
ELISA	0.2 µg/mL - 1 µg/mL
ChIP assay	2 µg/mL - 10 µg/mL

Not tested in other applications.

Product Note

This antibody reacts to Histone H3 trimethylated at Lysine 36 (K36me3). No cross reactivity with monomethylated Lysine 36 (K36me1), dimethylated Lysine 36 (K36me2), or other methylations in histone H3.

PROPERTIES

Form	Liquid
Buffer	PBS, 1% BSA, 50% Glycerol
Preservative	0.09% Sodium azide
Storage	Store as concentrated solution. Centrifuge briefly prior to opening vial. For short-term storage (1-2 weeks), store at 4°C. For long-term storage, aliquot and store at -20°C or below. Avoid multiple freeze-thaw cycles.
Concentration	Batch dependent (Please refer to the vial label for the specific concentration.)
Immunogen	A trimethyl-peptide corresponding to trimethyl-Histone H3 (Lys36).
Purification	Protein A purified From tissue culture supernatant
Conjugation	Unconjugated



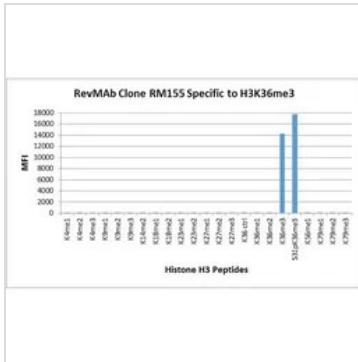
For full product information, images and publications, please visit our [website](#).

Date 2024 / 05 / 18 Page 1 of 2

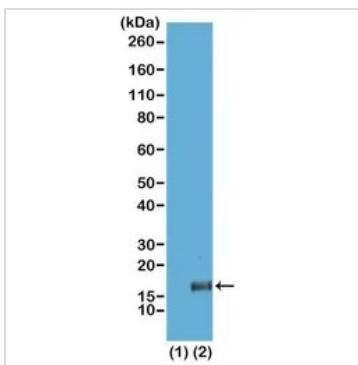
For laboratory research use only. Not for any clinical, therapeutic, or diagnostic use in humans or animals. Not for animal or human consumption.

Note

Purchasers shall not, and agree not to enable third parties to, analyze, copy, reverse engineer or otherwise attempt to determine the structure or sequence of the product.

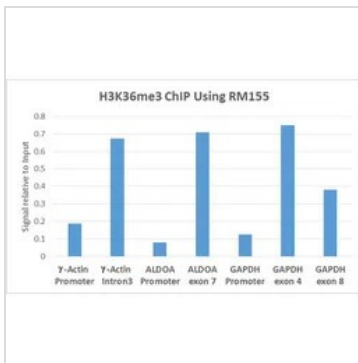
DATA IMAGES

GTx60882 Image

The GTx60882 reacts to Histone H3 trimethylated at Lysine 36 (K36me3). No cross reactivity with non-modified Lysine 36 (K36 Ctrl), monomethylated Lysine 36 (K36me1) or dimethylated Lysine 36 (K36me2), or other methylations in Histone H3.


GTx60882 WB Image

WB analysis of recombinant histone H3.3 (1) and acid extracts of HeLa cells (2) using GTx60882 Histone H3K36me3 (Tri-methyl Lys36) antibody [RM155].

Dilution : 2µg/ml


GTx60882 ChIP assay Image

ChIP analysis of HeLa cells using GTx60882 Histone H3K36me3 (Tri-methyl Lys36) antibody [RM155]. Real-time PCR was performed using primers specific to the gene indicated.

Antibody amount : 5µg



For full product information, images and publications, please visit our [website](https://www.genetex.com).