

Histone H3 antibody [RM188]

Cat. No. GTX60888

| | |
|---------------------|-----------------------------------|
| Host | Rabbit |
| Clonality | Monoclonal |
| Isotype | IgG |
| Applications | WB, ICC/IF, ELISA, Sandwich ELISA |
| Reactivity | Human |

Package
100 µg

Applications

Application Note

*Optimal dilutions/concentrations should be determined by the researcher.

| Suggested dilution | Recommended dilution |
|--------------------|-------------------------|
| WB | 0.01 µg/mL - 0.25 µg/mL |
| ICC/IF | 1 µg/mL - 5 µg/mL |
| ELISA | 0.2 µg/mL - 1 µg/mL |
| Sandwich ELISA | Assay dependent |

Note : Capture : GTX60888, Detection : GTX60885/GTX60886 or Capture : GTX60883, Detection : GTX60888. Please notice that GTX60885/GTX60886/GTX60888 need to be conjugated to Biotin to function as the detection antibody when paired with corresponding capture antibodies. Biotin-conjugated form are not provided.

Not tested in other applications.

Product Note

This antibody reacts to all Histone H3 proteins, independent of post-translational modifications. No cross reactivity with other histone proteins

Properties

| | |
|----------------------|--|
| Form | Liquid |
| Buffer | PBS, 1% BSA, 50% Glycerol |
| Preservative | 0.09% Sodium azide |
| Storage | Store as concentrated solution. Centrifuge briefly prior to opening vial. For short-term storage (1-2 weeks), store at 4°C. For long-term storage, aliquot and store at -20°C or below. Avoid multiple freeze-thaw cycles. |
| Concentration | Batch dependent (Please refer to the vial label for the specific concentration.) |
| Immunogen | A peptide corresponding to the C-terminus of human Histone H3. |
| Purification | Protein A purified From tissue culture supernatant |
| Conjugation | Unconjugated |



For full product information, images and publications, please visit our [website](#).

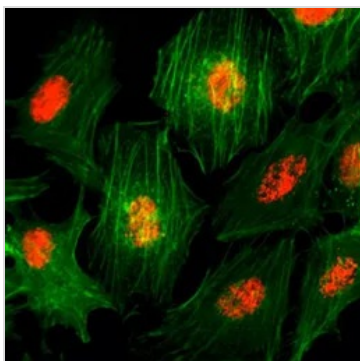
Date 2026 / 05 / 04 Page 1 of 2

For laboratory research use only. Not for any clinical, therapeutic, or diagnostic use in humans or animals. Not for animal or human consumption.

Note

Purchasers shall not, and agree not to enable third parties to, analyze, copy, reverse engineer or otherwise attempt to determine the structure or sequence of the product.

DATA IMAGES

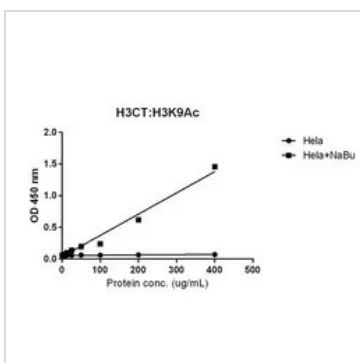


GTX60888 ICC/IF Image

ICC/IF analysis of HeLa cells using GTX60888 Histone H3 antibody [RM188].

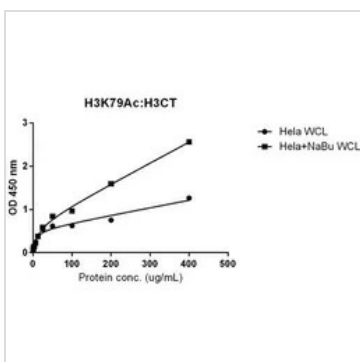
Red : Primary antibody

Green : Actin



GTX60888 ELISA Image

Sandwich ELISA analysis of HeLa cell treated or untreated with Sodium Butyrate lysates using biotinylated GTX60885 Histone H3K9ac (Acetyl Lys9) antibody [RM161] (1 ug/mL) as the detection antibody and GTX60888 Histone H3 antibody [RM188] (1 ug/mL) as the capture antibody. Please notice that GTX60885 needs to be conjugated to Biotin to function as the detection antibody when paired with GTX60888. Biotin-conjugated form is not provided.



GTX60888 ELISA Image

Sandwich ELISA analysis of HeLa cell treated or untreated with Sodium Butyrate lysates using GTX60883 Histone H3K79ac (Acetyl Lys79) antibody [RM156] (5 ug/mL) as the capture antibody and biotinylated GTX60888 Histone H3 antibody [RM188] (1 ug/mL) as the detection antibody. Please notice that GTX60888 needs to be conjugated to Biotin to function as the detection antibody when paired with GTX60883. Biotin-conjugated form is not provided.



For full product information, images and publications, please visit our [website](#).