

## Histone H3K18me2 (Di-methyl Lys18) antibody [RM168]

Cat. No. GTX60899

Host	Rabbit
Clonality	Monoclonal
Isotype	IgG
Application	WB, Dot, ELISA
Reactivity	Human

Package  
100 µg

## APPLICATION

## Application Note

\*Optimal dilutions/concentrations should be determined by the researcher.

Suggested dilution	Recommended dilution
WB	0.2 µg/mL - 1 µg/mL
Dot	Assay dependent
ELISA	0.1 µg/mL - 0.5 µg/mL

Not tested in other applications.

## Product Note

This antibody reacts to Histone H3 dimethylated at Lysine 18 (K18me2). No cross reactivity with nonmodified Lysine 18, monomethylated Lysine 18 (K18me1), or other methylations in histone H3.

## PROPERTIES

Form	Liquid
Buffer	PBS, 1% BSA, 50% Glycerol
Preservative	0.09% Sodium azide
Storage	Store as concentrated solution. Centrifuge briefly prior to opening vial. For short-term storage (1-2 weeks), store at 4°C. For long-term storage, aliquot and store at -20°C or below. Avoid multiple freeze-thaw cycles.
Concentration	Batch dependent (Please refer to the vial label for the specific concentration.)
Immunogen	A dimethyl-peptide corresponding to dimethyl-Histone H3 (Lys18).
Purification	Protein A purified From tissue culture supernatant
Conjugation	Unconjugated



For full product information, images and publications, please visit our [website](#).

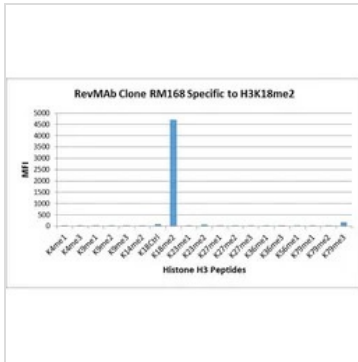
Date 2024 / 05 / 18 Page 1 of 2

For laboratory research use only. Not for any clinical, therapeutic, or diagnostic use in humans or animals. Not for animal or human consumption.

#### Note

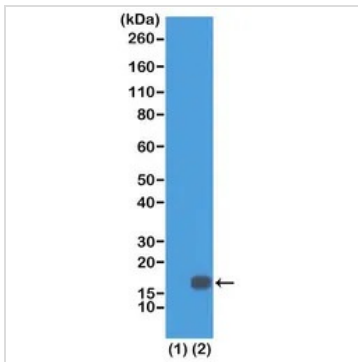
Purchasers shall not, and agree not to enable third parties to, analyze, copy, reverse engineer or otherwise attempt to determine the structure or sequence of the product.

#### DATA IMAGES



#### GTx60899 Image

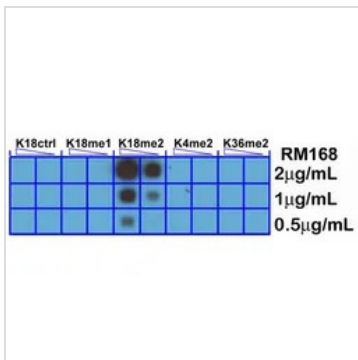
The GTx60899 reacts to Histone H3 dimethylated at Lysine 18 (K18me2). No cross reactivity with other methylated lysines in Histone H3.



#### GTx60899 WB Image

WB analysis of recombinant histone H3.3 (1) and acid extracts of HeLa cells (2) using GTx60899 Histone H3K18me2 (Di-methyl Lys18) antibody [RM168].

Dilution : 0.5µg/ml



#### GTx60899 Dot Image

Dot blot analysis of various peptides using GTx60899 Histone H3K18me2 (Di-methyl Lys18) antibody [RM168]. No cross reactivity with nonmodified Lysine 18 (K18Ctrl), monomethylated. Lysine 18 (K18me1), dimethylated Lysine 4 (K4me2), or dimethylated Lysine 36 (K36me2).



For full product information, images and publications, please visit our [website](https://www.genetex.com).