

Histone H4S1ph (phospho Ser1) antibody [RM194]

Cat. No. GTX60903

Host	Rabbit
Clonality	Monoclonal
Isotype	IgG
Application	WB, ICC/IF, ELISA
Reactivity	Human

Package
100 µg

APPLICATION

Application Note

*Optimal dilutions/concentrations should be determined by the researcher.

Suggested dilution	Recommended dilution
WB	0.5 µg/mL - 2 µg/mL
ICC/IF	1 µg/mL - 2 µg/mL
ELISA	0.2 µg/mL - 1 µg/mL

Not tested in other applications.

Product Note

This antibody reacts to Histone H4 phosphorylated at Serine 1. The reactivity is not affected by neighboring Arginine 3 modifications. No cross reactivity with Histone H2A phosphorylated at Serine 1.

PROPERTIES

Form	Liquid
Buffer	PBS, 1% BSA, 50% Glycerol
Preservative	0.09% Sodium azide
Storage	Store as concentrated solution. Centrifuge briefly prior to opening vial. For short-term storage (1-2 weeks), store at 4°C. For long-term storage, aliquot and store at -20°C or below. Avoid multiple freeze-thaw cycles.
Concentration	Batch dependent (Please refer to the vial label for the specific concentration.)
Immunogen	A phospho-peptide corresponding to the Phospho-Histone H4 (pSer1).
Purification	Protein A purified From tissue culture supernatant
Conjugation	Unconjugated



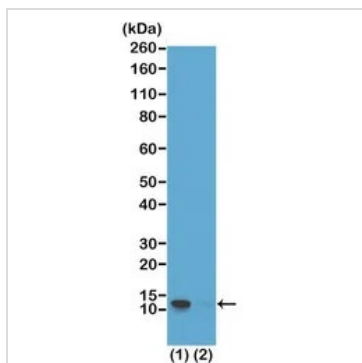
For full product information, images and publications, please visit our [website](#).

Date 2024 / 05 / 18 Page 1 of 2

For laboratory research use only. Not for any clinical, therapeutic, or diagnostic use in humans or animals. Not for animal or human consumption.

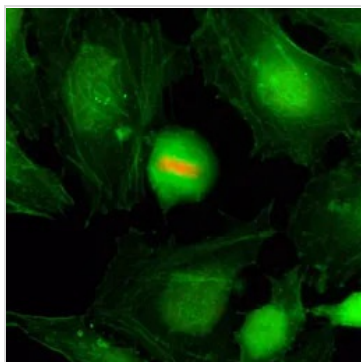
Note

Purchasers shall not, and agree not to enable third parties to, analyze, copy, reverse engineer or otherwise attempt to determine the structure or sequence of the product.

DATA IMAGES

GTX60903 WB Image

WB analysis of extracts of HeLa cells (Lane 1) and recombinant Histone H4 protein (Lane 2) using GTX60903 Histone H4S1ph (phospho Ser1) antibody [RM194].

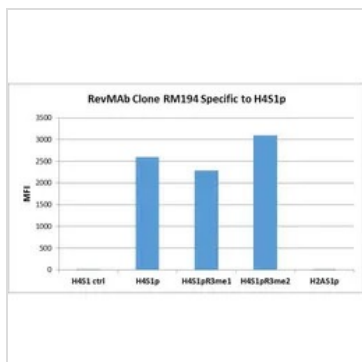
Dilution : 1µg/ml


GTX60903 ICC/IF Image

ICC/IF analysis of HeLa cells using GTX60903 Histone H4S1ph (phospho Ser1) antibody [RM194].

Red : Primary antibody

Green : Actin


GTX60903 Image

The GTX60903 reacts to Histone H4 phosphorylated at Serine 1 (H4S1p). The reactivity is not affected by neighboring Arginine 3 modifications (H4S1pR3me1 and H4S1pR3me2). No cross reactivity with Histone H2A phosphorylated at Serine 1 (H2AS1p).



For full product information, images and publications, please visit our [website](https://www.genetex.com).