

Histone H4R3me1 (Monomethyl Arg3) antibody [RM195]

Cat. No. GTX60904

Host	Rabbit
Clonality	Monoclonal
Isotype	IgG
Application	WB, ICC/IF, ELISA
Reactivity	Human

Package
100 µg

APPLICATION

Application Note

*Optimal dilutions/concentrations should be determined by the researcher.

Suggested dilution	Recommended dilution
WB	0.5 µg/mL - 2 µg/mL
ICC/IF	1 µg/mL - 2 µg/mL
ELISA	0.2 µg/mL - 1 µg/mL

Not tested in other applications.

Product Note

This antibody reacts to Histone H4 monomethylated at Arginine 3 (R3me1). No cross reactivity with unmodified Arginine 3, asymmetric or symmetric dimethylated Arginine 3, and citrullinated Arginine 3 in Histone H4.

PROPERTIES

Form	Liquid
Buffer	PBS, 1% BSA, 50% Glycerol
Preservative	0.09% Sodium azide
Storage	Store as concentrated solution. Centrifuge briefly prior to opening vial. For short-term storage (1-2 weeks), store at 4°C. For long-term storage, aliquot and store at -20°C or below. Avoid multiple freeze-thaw cycles.
Concentration	Batch dependent (Please refer to the vial label for the specific concentration.)
Immunogen	A monomethyl -peptide corresponding to the Monomethyl -Histone H4 (Arg3).
Purification	Protein A purified From tissue culture supernatant
Conjugation	Unconjugated



For full product information, images and publications, please visit our [website](#).

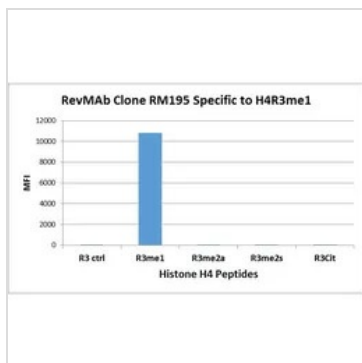
Date 2024 / 05 / 18 Page 1 of 2

For laboratory research use only. Not for any clinical, therapeutic, or diagnostic use in humans or animals. Not for animal or human consumption.

Note

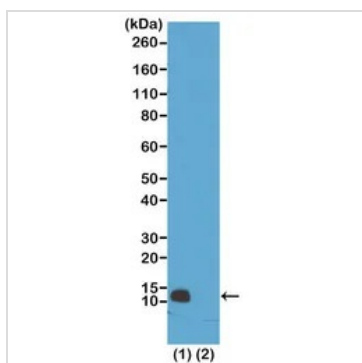
Purchasers shall not, and agree not to enable third parties to, analyze, copy, reverse engineer or otherwise attempt to determine the structure or sequence of the product.

DATA IMAGES



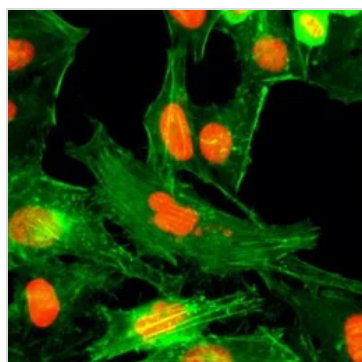
GTx60904 Image

The GTx60904 reacts to Histone H4 mono-methylated at Arginine 3 (R3me1). No cross reactivity with unmodified Arg 3 (R3 ctrl), asymmetric dimethylated Arg 3 (R3me2a) or symmetric dimethylated Arg 3 (R3me2s), and citrullinated Arg 3 (R3Cit) in Histone H4.



GTx60904 WB Image

WB analysis of extracts of HeLa cells (Lane 1) and recombinant Histone H4 protein (Lane 2) using GTx60904 Histone H4R3me1 (Monomethyl Arg3) antibody [RM195].
Dilution : 0.5µg/ml



GTx60904 ICC/IF Image

ICC/IF analysis of HeLa cells treated with sodium butyrate using GTx60904 Histone H4R3me1 (Monomethyl Arg3) antibody [RM195].
Red : Primary antibody
Green : Actin



For full product information, images and publications, please visit our [website](https://www.genetex.com).