

Histone H3K23ac (Acetyl Lys23) antibody [RM169]

Cat. No. GTX60911

Host	Rabbit
Clonality	Monoclonal
Isotype	IgG
Applications	WB, ICC/IF, ELISA
Reactivity	Human

Package
100 µg

Applications

Application Note

*Optimal dilutions/concentrations should be determined by the researcher.

Suggested dilution	Recommended dilution
WB	0.5 µg/mL - 2 µg/mL
ICC/IF	1 µg/mL - 2 µg/mL
ELISA	0.5 µg/mL - 1 µg/mL

Not tested in other applications.

Product Note This antibody reacts to Histone H3 acetylated at Lysine 23 (K23ac). No cross reactivity with other acetylated Lysines in histone H3.

Properties

Form	Liquid
Buffer	PBS, 1% BSA, 50% Glycerol
Preservative	0.09% Sodium azide
Storage	Store as concentrated solution. Centrifuge briefly prior to opening vial. For short-term storage (1-2 weeks), store at 4°C. For long-term storage, aliquot and store at -20°C or below. Avoid multiple freeze-thaw cycles.
Concentration	Batch dependent (Please refer to the vial label for the specific concentration.)
Immunogen	An acetyl-peptide corresponding to Acetyl-Histone H3 (Lys23).
Purification	Protein A purified From tissue culture supernatant
Conjugation	Unconjugated



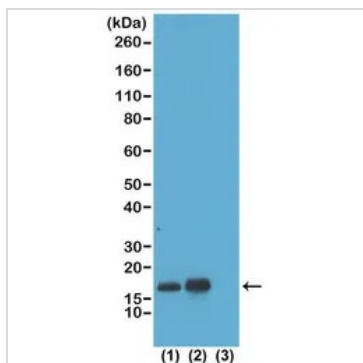
For full product information, images and publications, please visit our [website](#).

For laboratory research use only. Not for any clinical, therapeutic, or diagnostic use in humans or animals. Not for animal or human consumption.

Note

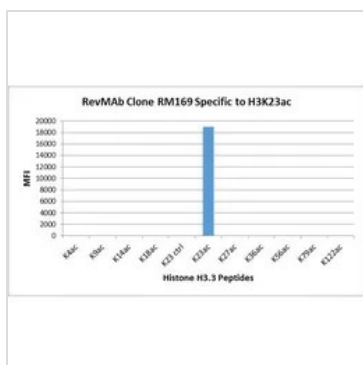
Purchasers shall not, and agree not to enable third parties to, analyze, copy, reverse engineer or otherwise attempt to determine the structure or sequence of the product.

DATA IMAGES



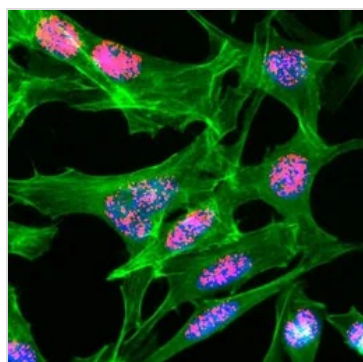
GTX60911 WB Image

WB analysis of acid extracts of HeLa cells non-treated(1) or treated with sodium butyrate (2), and recombinant histone H3.3 (3) using GTX60911 Histone H3K23ac (Acetyl Lys23) antibody [RM169].
Dilution : 1µg/ml



GTX60911 Image

The GTX60911 reacts to Histone H3 acetylated at Lysine 23(K23ac). No cross reactivity with unmodified Lysine 23 (K23 ctrl), acetylated Lysine 4 (K4ac), Lysine 9 (K9ac), Lysine 14 (K14ac), Lysine 18 (K18ac), Lysine 27 (K27ac), Lysine 36 (K36ac), Lysine 56 (K56ac), lysine 79 (K79ac), or Lysine 122 (K122) in histone H3.



GTX60911 ICC/IF Image

ICC/IF analysis of HeLa cells treated with sodium butyrate using GTX60911 Histone H3K23ac (Acetyl Lys23) antibody [RM169].
Red : Primary antibody
Green : Actin



For full product information, images and publications, please visit our [website](#).