

Histone H3T6ph (phospho Thr6) antibody [RM160]

Cat. No. GTX60916

Host	Rabbit
Clonality	Monoclonal
Isotype	IgG
Application	WB, ELISA
Reactivity	Human

Reference (1)
Package
100 µg

APPLICATION

Application Note

*Optimal dilutions/concentrations should be determined by the researcher.

Suggested dilution	Recommended dilution
WB	0.1 µg/mL - 1 µg/mL
ELISA	0.2 µg/mL - 1 µg/mL

Not tested in other applications.

Product Note This antibody reacts to Histone H3 phosphorylated at Threonine 6. No cross reactivity with other phosphorylated histones

PROPERTIES

Form	Liquid
Buffer	PBS, 1% BSA, 50% Glycerol
Preservative	0.09% Sodium azide
Storage	Store as concentrated solution. Centrifuge briefly prior to opening vial. For short-term storage (1-2 weeks), store at 4°C. For long-term storage, aliquot and store at -20°C or below. Avoid multiple freeze-thaw cycles.
Concentration	Batch dependent (Please refer to the vial label for the specific concentration.)
Immunogen	A phospho-peptide corresponding to Phospho-Histone H3 (Thr6).
Purification	Protein A purified From tissue culture supernatant
Conjugation	Unconjugated

Note

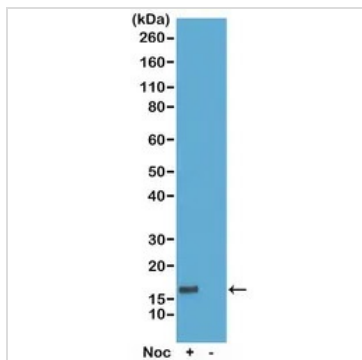
For laboratory research use only. Not for any clinical, therapeutic, or diagnostic use in humans or animals. Not for animal or human consumption.

Purchasers shall not, and agree not to enable third parties to, analyze, copy, reverse engineer or otherwise attempt to determine the structure or sequence of the product.



For full product information, images and publications, please visit our [website](#).

DATA IMAGES



GTx60916 WB Image

WB analysis of acid extracts of HeLa cells treated or non-treated with Nocodazole using GTx60916 Histone H3T6ph (phospho Thr6) antibody [RM160].

Dilution : 0.1µg/ml



For full product information, images and publications, please visit our [website](#).