

Phosphotyrosine antibody [RM111]

Cat. No. GTX60918

Host	Rabbit
Clonality	Monoclonal
Isotype	IgG
Applications	WB, ICC/IF, FCM, IP, ELISA, IHC
Reactivity	Species independent

Package
100 µg

Applications

Application Note

*Optimal dilutions/concentrations should be determined by the researcher.

Suggested dilution	Recommended dilution
WB	1:1000 - 1:5000
ICC/IF	1:200 - 1:500
FCM	Assay dependent
IP	1:200 - 1:1000
ELISA	Assay dependent
IHC	1:200 - 1:500

Not tested in other applications.

Product Note

This antibody reacts to tyrosine-phosphorylated proteins. No cross reactivity with nonphosphorylated tyrosine, phosphoserine, and phosphothreonine

Properties

Form	Liquid
Buffer	PBS, 1% BSA, 50% Glycerol
Preservative	0.09% Sodium azide
Storage	Store as concentrated solution. Centrifuge briefly prior to opening vial. For short-term storage (1-2 weeks), store at 4°C. For long-term storage, aliquot and store at -20°C or below. Avoid multiple freeze-thaw cycles.
Concentration	Batch dependent (Please refer to the vial label for the specific concentration.)
Immunogen	Phosphotyrosine-BSA conjugate
Purification	Protein A purified From tissue culture supernatant
Conjugation	Unconjugated



For full product information, images and publications, please visit our [website](#).

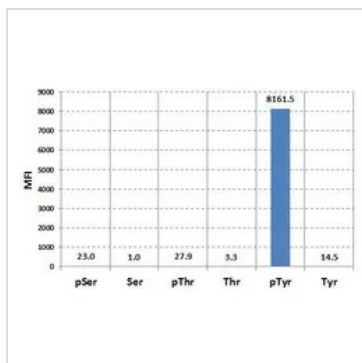
Date 2026 / 01 / 13 Page 1 of 2

For laboratory research use only. Not for any clinical, therapeutic, or diagnostic use in humans or animals. Not for animal or human consumption.

Note

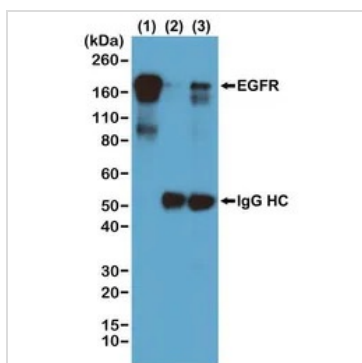
Purchasers shall not, and agree not to enable third parties to, analyze, copy, reverse engineer or otherwise attempt to determine the structure or sequence of the product.

DATA IMAGES



GTX60918 Image

Luminex analysis of Clone RM111's reaction against phosphorylated or nonphosphorylated Serine, Threonine, and Tyrosine. The GTX60918 reacts only to phosphorylated Tyrosine.



GTX60918 IP Image

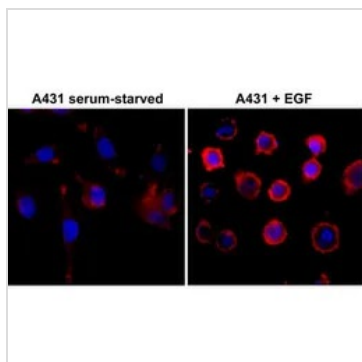
IP analysis of EGF-treated A431 cells using GTX60918 Phosphotyrosine antibody [RM111].

Lane 1 : Whole lysate control

Lane 2 : IP by rabbit IgG control

Lane 3 : IP by Primary antibody

Dilution : 1:1000



GTX60918 ICC/IF Image

ICC/IF analysis of A431 cells nontreated or treated with EGF using GTX60918 Phosphotyrosine antibody [RM111].

Red : Primary antibody

Blue : DAPI

Dilution : 1:500



For full product information, images and publications, please visit our [website](https://www.genetex.com).