

Rabbit Anti-Human Ig light chain antibody [RM129] (Biotin)

Cat. No. GTX60920

Host	Rabbit
Clonality	Monoclonal
Isotype	IgG
Application	ICC/IF, IHC-P, FACS, ELISA, Sandwich ELISA
Reactivity	Human

Package
50 µg

APPLICATION

Application Note

*Optimal dilutions/concentrations should be determined by the researcher.

Suggested dilution	Recommended dilution
ICC/IF	0.5µg/mL - 2µg/mL
IHC-P	0.5µg/mL - 2µg/mL
FACS	Assay dependent
ELISA	0.02µg/mL - 0.25µg/mL
Sandwich ELISA	Assay dependent

**Note : Capture : GTX20291/GTX60861/GTX60862/GTX60863/GTX60864/GTX60865
/GTX60866/GTX60867/GTX60868/GTX60869/GTX60870/GTX60873,
Detection : GTX60920**

Not tested in other applications.

Product Note

This antibody reacts to both kappa and lambda light chains of human immunoglobulins. The antibody does not react to monkey (Cyno or Rhesus) IgG, mouse IgG, rat IgG, or goat IgG.

PROPERTIES

Form	Liquid
Buffer	PBS, 1% BSA, 50% Glycerol
Preservative	0.09% Sodium azide
Storage	Store as concentrated solution. Centrifuge briefly prior to opening vial. For short-term storage (1-2 weeks), store at 4°C. For long-term storage, aliquot and store at -20°C or below. Avoid multiple freeze-thaw cycles.
Concentration	Batch dependent (Please refer to the vial label for the specific concentration.)
Immunogen	Human IgG
Purification	Protein A purified From tissue culture supernatant



For full product information, images and publications, please visit our [website](#).

Conjugation

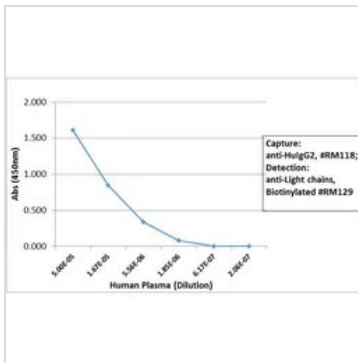
Biotin

For laboratory research use only. Not for any clinical, therapeutic, or diagnostic use in humans or animals. Not for animal or human consumption.

Note

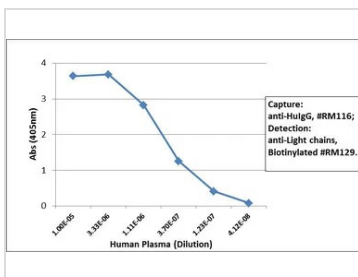
Purchasers shall not, and agree not to enable third parties to, analyze, copy, reverse engineer or otherwise attempt to determine the structure or sequence of the product.

DATA IMAGES



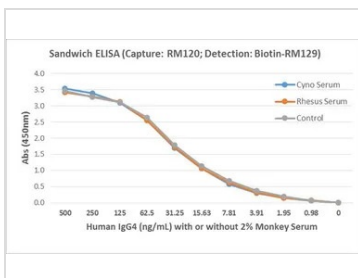
GTX60920 ELISA Image

Sandwich ELISA analysis of human plasma using GTX60863 Human IgG2 antibody [RM118] as the capture antibody and GTX60920 Human Ig Light Chains antibody [RM129] (Biotin) as the detection antibody.



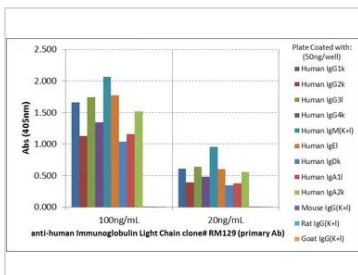
GTX60920 ELISA Image

Sandwich ELISA analysis of human plasma using GTX60861 Human IgG (Fc) antibody [RM116] as the capture antibody (100ng/well) and GTX60920 Human Ig Light Chains antibody [RM129] (Biotin)(1 ug/mL) as the detection antibody.



GTX60920 ELISA Image

Sandwich ELISA analysis of human IgG4 in monkey serum using GTX60865 Human IgG4 antibody [RM120] as the capture antibody and GTX60920 Human Ig Light Chains antibody [RM129] (Biotin) as the detection antibody.



GTX60920 ELISA Image

ELISA analysis of human immunoglobulins using GTX60920 Human Ig Light Chains antibody [RM129] (Biotin).



For full product information, images and publications, please visit our [website](#).