

Rabbit Anti-Human Ig light chain antibody [RM129] (Biotin)

Cat. No. GTX60920

Host	Rabbit
Clonality	Monoclonal
Isotype	IgG
Applications	ICC/IF, IHC-P, FCM, ELISA, Sandwich ELISA
Reactivity	Human

Package

50 µg

Applications

Application Note

*Optimal dilutions/concentrations should be determined by the researcher.

Suggested dilution	Recommended dilution
ICC/IF	0.5µg/mL - 2µg/mL
IHC-P	0.5µg/mL - 2µg/mL
FCM	Assay dependent
ELISA	0.02µg/mL - 0.25µg/mL
Sandwich ELISA	Assay dependent

**Note : Capture : GTX20291/GTX60861/GTX60862/GTX60863/GTX60864/GTX60865
/GTX60866/GTX60867/GTX60868/GTX60869/GTX60870/GTX60873,
Detection : GTX60920**

Not tested in other applications.

Product Note

This antibody reacts to both kappa and lambda light chains of human immunoglobulins. The antibody does not react to monkey (Cyno or Rhesus) IgG, mouse IgG, rat IgG, or goat IgG.

Properties

Form	Liquid
Buffer	PBS, 1% BSA, 50% Glycerol
Preservative	0.09% Sodium azide
Storage	Store as concentrated solution. Centrifuge briefly prior to opening vial. For short-term storage (1-2 weeks), store at 4°C. For long-term storage, aliquot and store at -20°C or below. Avoid multiple freeze-thaw cycles.
Concentration	Batch dependent (Please refer to the vial label for the specific concentration.)
Immunogen	Human IgG
Purification	Protein A purified From tissue culture supernatant



For full product information, images and publications, please visit our [website](#).

Conjugation

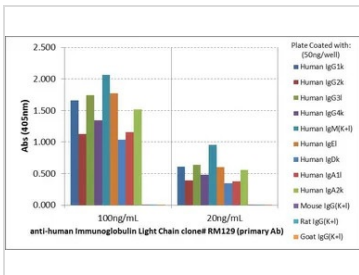
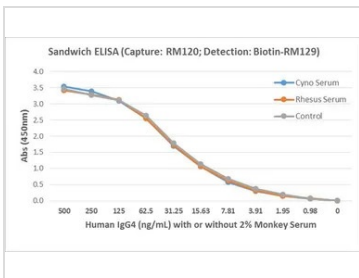
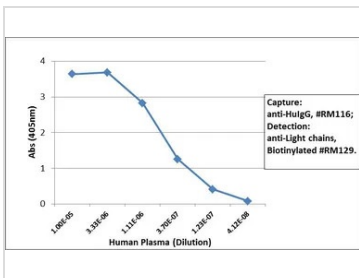
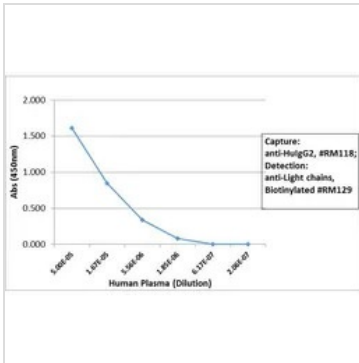
Biotin

Note

For laboratory research use only. Not for any clinical, therapeutic, or diagnostic use in humans or animals. Not for animal or human consumption.

Purchasers shall not, and agree not to enable third parties to, analyze, copy, reverse engineer or otherwise attempt to determine the structure or sequence of the product.

DATA IMAGES



For full product information, images and publications, please visit our [website](#).