

Goat Anti-Rabbit IgG (Fab) antibody [RMG01]

Cat. No. GTX60921

Host	Goat
Clonality	Monoclonal
Isotype	IgG
Applications	WB, FCM, IP, ELISA
Reactivity	Rabbit

Package
100 µg

Applications

Application Note

*Optimal dilutions/concentrations should be determined by the researcher.

Suggested dilution	Recommended dilution
WB	0.1 µg/mL - 0.5 µg/mL
FCM	Assay dependent
IP	Assay dependent
ELISA	0.01 µg/mL - 0.5 µg/mL

Not tested in other applications.

Product Note This antibody reacts to the Fab region of Rabbit IgG. No cross reactivity with human IgG, rat IgG, or mouse IgG.

Properties

Form	Liquid
Buffer	PBS, 1% BSA, 50% Glycerol
Preservative	0.09% Sodium azide
Storage	Store as concentrated solution. Centrifuge briefly prior to opening vial. For short-term storage (1-2 weeks), store at 4°C. For long-term storage, aliquot and store at -20°C or below. Avoid multiple freeze-thaw cycles.
Concentration	Batch dependent (Please refer to the vial label for the specific concentration.)
Immunogen	Rabbit IgG
Purification	Protein G purified From tissue culture supernatant
Conjugation	Unconjugated



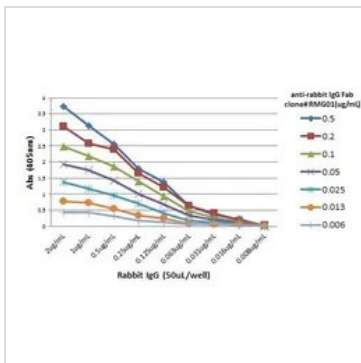
For full product information, images and publications, please visit our [website](#).

For laboratory research use only. Not for any clinical, therapeutic, or diagnostic use in humans or animals. Not for animal or human consumption.

Note

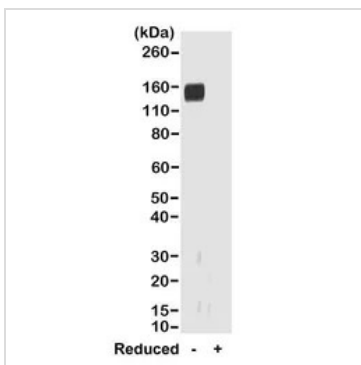
Purchasers shall not, and agree not to enable third parties to, analyze, copy, reverse engineer or otherwise attempt to determine the structure or sequence of the product.

DATA IMAGES



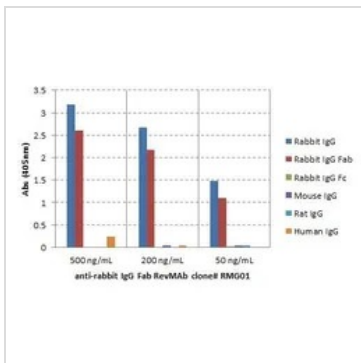
GTX60921 ELISA Image

ELISA analysis of different amount of immunogen proteins using serial diluted GTX60921 Goat Anti-Rabbit IgG (Fab) antibody [RMG01].



GTX60921 WB Image

WB analysis of nonreduced(-) and reduced(+) rabbit IgG (20ng/lane) using GTX60921 Goat Anti-Rabbit IgG (Fab) antibody [RMG01].
Dilution : 0.2µg/ml



GTX60921 ELISA Image

ELISA analysis of IgGs from different species using GTX60921 Goat Anti-Rabbit IgG (Fab) antibody [RMG01]. No cross reactivity with human IgG, rat IgG, or mouse IgG.
Dilution : 500 ng/mL, 200 ng/mL, or 50 ng/mL of RMG01 was used as the primary antibody.



For full product information, images and publications, please visit our [website](#).