

# Goat Anti-Rabbit IgG (Fc) antibody [RMG02]

**Cat. No. GTX60922**

<b>Host</b>	Goat
<b>Clonality</b>	Monoclonal
<b>Isotype</b>	IgG
<b>Applications</b>	WB, FCM, IP, ELISA
<b>Reactivity</b>	Rabbit

**Package**  
100 µg

## Applications

### Application Note

\*Optimal dilutions/concentrations should be determined by the researcher.

Suggested dilution	Recommended dilution
WB	0.1 µg/mL - 0.5 µg/mL
FCM	Assay dependent
IP	Assay dependent
ELISA	0.01 µg/mL - 0.5 µg/mL

Not tested in other applications.

**Product Note** This antibody reacts to the Fc region of Rabbit IgG. No cross reactivity with human IgG, rat IgG, or mouse IgG.

## Properties

<b>Form</b>	Liquid
<b>Buffer</b>	PBS, 1% BSA, 50% Glycerol
<b>Preservative</b>	0.09% Sodium azide
<b>Storage</b>	Store as concentrated solution. Centrifuge briefly prior to opening vial. For short-term storage (1-2 weeks), store at 4°C. For long-term storage, aliquot and store at -20°C or below. Avoid multiple freeze-thaw cycles.
<b>Concentration</b>	Batch dependent (Please refer to the vial label for the specific concentration.)
<b>Immunogen</b>	Rabbit IgG
<b>Purification</b>	Protein G purified From tissue culture supernatant
<b>Conjugation</b>	Unconjugated



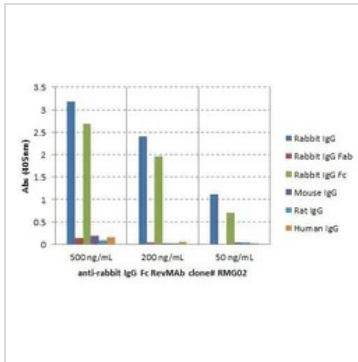
For full product information, images and publications, please visit our [website](#).

For laboratory research use only. Not for any clinical, therapeutic, or diagnostic use in humans or animals. Not for animal or human consumption.

#### Note

Purchasers shall not, and agree not to enable third parties to, analyze, copy, reverse engineer or otherwise attempt to determine the structure or sequence of the product.

#### DATA IMAGES

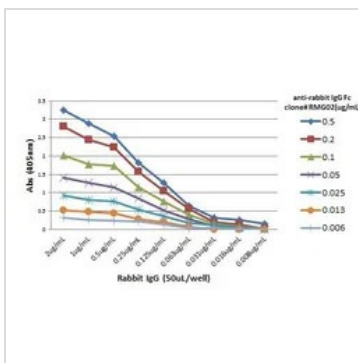


#### GTX60922 ELISA Image

ELISA analysis of IgGs from different species using GTX60922 Goat Anti-Rabbit IgG (Fc) antibody [RMG02].

No cross reactivity with human IgG, rat IgG, or mouse IgG.

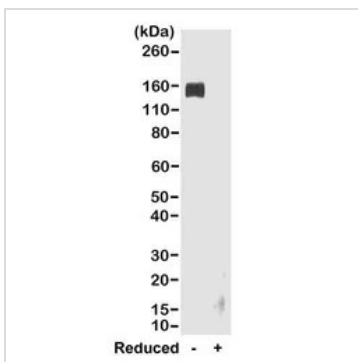
Dilution : 500 ng/mL, 200 ng/mL, or 50 ng/mL of RMG02 was used as the primary antibody.



#### GTX60922 ELISA Image

ELISA analysis of different amount of immunogen proteins using serial diluted GTX60922 Goat Anti-Rabbit

IgG (Fc) antibody [RMG02].



#### GTX60922 WB Image

WB analysis of nonreduced(-) and reduced(+) rabbit IgG (20ng/lane) using GTX60922 Goat Anti-Rabbit IgG (Fc) antibody [RMG02].

Dilution : 0.2μg/ml



For full product information, images and publications, please visit our [website](https://www.genetex.com).