

## Histone H3S28ph (phospho Ser28) antibody [HTA28]

Cat. No. GTX60927

<b>Host</b>	Rat
<b>Clonality</b>	Monoclonal
<b>Isotype</b>	IgG2a
<b>Applications</b>	WB, ICC/IF, FCM
<b>Reactivity</b>	Human, Mouse, Bovine, Hamster

Package  
100 µl

## Applications

## Application Note

\*Optimal dilutions/concentrations should be determined by the researcher.

Suggested dilution	Recommended dilution
WB	0.5-1 µg/ml
ICC/IF	Assay dependent
FCM	Assay dependent

Not tested in other applications.

## Product Note

Monoclonal Anti-Phospho-Histone H3 (pSer28) reacts specifically with histone H3 phosphorylated at Ser28 near its N-terminus, and does not detect the unphosphorylated epitope. It detects the phosphorylated histone molecule at the onset of mitosis (prophase, metaphase and weaker at the beginning of anaphase), but not during late anaphase. Reactivity has been observed with human, bovine, hamster and mouse.

## Properties

<b>Form</b>	Liquid
<b>Buffer</b>	PBS, 1% BSA
<b>Preservative</b>	15mM Sodium azide
<b>Storage</b>	Store as concentrated solution. Centrifuge briefly prior to opening vial. For short-term storage (1-2 weeks), store at 4°C. For long-term storage, aliquot and store at -20°C or below. Avoid multiple freeze-thaw cycles.
<b>Concentration</b>	~0.5 mg/ml (Please refer to the vial label for the specific concentration.)
<b>Immunogen</b>	synthetic peptide corresponding to amino acids 23-35 (pSer28) of human histone H3.
<b>Purification</b>	Purified immunoglobulin
<b>Conjugation</b>	Unconjugated



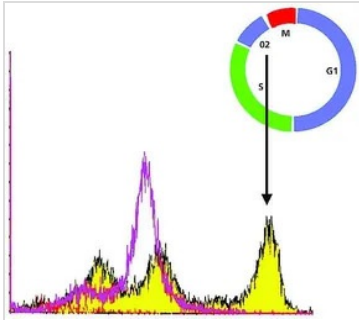
For full product information, images and publications, please visit our [website](#).

For laboratory research use only. Not for any clinical, therapeutic, or diagnostic use in humans or animals. Not for animal or human consumption.

## Note

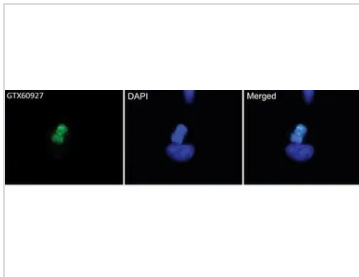
Purchasers shall not, and agree not to enable third parties to, analyze, copy, reverse engineer or otherwise attempt to determine the structure or sequence of the product.

## DATA IMAGES



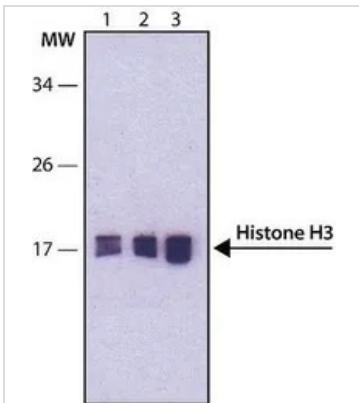
### GTx60927 FCM Image

FACS analysis of human leukemic cells using GTx60927 Histone H3 (phospho Ser28) antibody [HTA28].



### GTx60927 ICC/IF Image

ICC/IF analysis of HeLa cells using GTx60927 Histone H3 (phospho Ser28) antibody [HTA28] at 5 µg/mL (green) with DAPI (blue). Cells were fixed and permeabilized with methanol followed by methanol:acetone.



### GTx60927 WB Image

WB analysis of HeLa cell lysate using GTx60927 Histone H3 (phospho Ser28) antibody [HTA28].

Lane 1 : Antibody dilution 0.5 µg/mL

Lane 2 : Antibody dilution 1 µg/mL

Lane 3 : Antibody dilution 2 µg/mL



For full product information, images and publications, please visit our [website](https://www.genetex.com).