

# FCN1 antibody [1]

**Cat. No. GTX60944**

<b>Host</b>	Mouse
<b>Clonality</b>	Monoclonal
<b>Isotype</b>	IgG1
<b>Applications</b>	IHC-P, ELISA
<b>Reactivity</b>	Human

**Package**  
100 µl

## Applications

### Application Note

\*Optimal dilutions/concentrations should be determined by the researcher.

Suggested dilution	Recommended dilution
IHC-P	Assay dependent
ELISA	Assay dependent

Not tested in other applications.

**Product Note** This antibody reacts with M-Ficolin.

## Properties

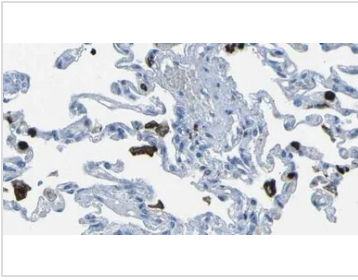
<b>Form</b>	Liquid
<b>Buffer</b>	10mM Phosphate, 500mM NaCl
<b>Preservative</b>	15mM Sodium azide
<b>Storage</b>	Store as concentrated solution. Centrifuge briefly prior to opening vial. Store at 4°C.
<b>Concentration</b>	Batch dependent (Please refer to the vial label for the specific concentration.)
<b>Immunogen</b>	Recombinant human M-Ficolin (aa 95 to 314)
<b>Purification</b>	Protein-A purified
<b>Conjugation</b>	Unconjugated

**Note** For laboratory research use only. Not for any clinical, therapeutic, or diagnostic use in humans or animals. Not for animal or human consumption.

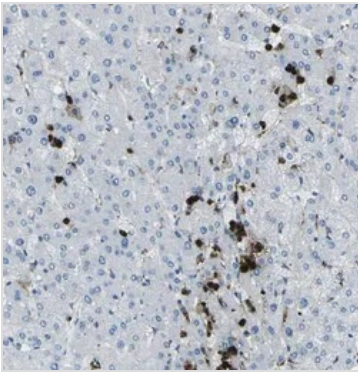
Purchasers shall not, and agree not to enable third parties to, analyze, copy, reverse engineer or otherwise attempt to determine the structure or sequence of the product.



For full product information, images and publications, please visit our [website](#).

**DATA IMAGES**

**GTX60944 IHC-P Image**

Paraffin-embedded human lung tissue immunostained with GTX60944


**GTX60944 IHC-P Image**

Paraffin-embedded human liver tissue immunostained with GTX60944



For full product information, images and publications, please visit our [website](#).