

Gelsolin antibody [20]

Cat. No. GTX60945

Host	Mouse
Clonality	Monoclonal
Isotype	IgG1
Applications	WB, ICC/IF, ELISA, IHC
Reactivity	Human

Package
100 µl

Applications

Application Note

*Optimal dilutions/concentrations should be determined by the researcher.

Suggested dilution	Recommended dilution
WB	Assay dependent
ICC/IF	Assay dependent
ELISA	Assay dependent
IHC	Assay dependent

Not tested in other applications.

Calculated MW 86 kDa. ([Note](#))

Product Note This antibody binds human gelsolin

Properties

Form	Liquid
Buffer	10mM Phosphate, 500mM NaCl
Preservative	15mM Sodium azide
Storage	Store as concentrated solution. Centrifuge briefly prior to opening vial. Store at 4°C.
Concentration	Batch dependent (Please refer to the vial label for the specific concentration.)
Immunogen	Gelsolin purified from human plasma
Purification	Protein-A purified
Conjugation	Unconjugated

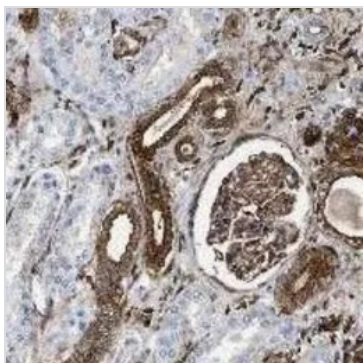
For full product information, images and publications, please visit our [website](#).

For laboratory research use only. Not for any clinical, therapeutic, or diagnostic use in humans or animals. Not for animal or human consumption.

Note

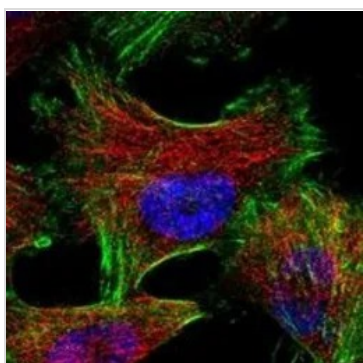
Purchasers shall not, and agree not to enable third parties to, analyze, copy, reverse engineer or otherwise attempt to determine the structure or sequence of the product.

DATA IMAGES



GTX60945 IHC Image

Immunohistochemical staining of human kidney with GTX60945 shows cytoplasmic and membranous positivity in both renal tubules and glomeruli. Antibody dilution: 1:6000



GTX60945 ICC/IF Image

Immunofluorescent staining of human cell line U-251 MG shows positivity in actin filaments. Antibody dilution: 1:2000



For full product information, images and publications, please visit our [website](#).