

GIP antibody [4]

Cat. No. GTX60948

Host	Mouse
Clonality	Monoclonal
Isotype	IgG1
Applications	IHC-P, ELISA
Reactivity	Human

Package
100 µl

Applications

Application Note

*Optimal dilutions/concentrations should be determined by the researcher.

Suggested dilution	Recommended dilution
IHC-P	Assay dependent
ELISA	Assay dependent

Not tested in other applications.

Product Note

This antibody binds human GIP. It cross-reacts up to 10% with PACAP and human GLP-2 but <0.1% with glucagon, GLP-1 or VIP.

Properties

Form	Liquid
Buffer	10mM Phosphate, 500mM NaCl
Preservative	15mM Sodium azide
Storage	Store as concentrated solution. Centrifuge briefly prior to opening vial. Store at 4°C.
Concentration	Batch dependent (Please refer to the vial label for the specific concentration.)
Immunogen	Synthetic human gastric inhibitory polypeptide
Purification	Protein-A purified
Conjugation	Unconjugated

Note

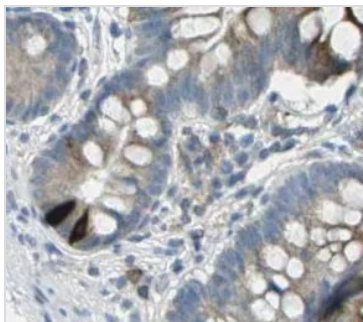
For laboratory research use only. Not for any clinical, therapeutic, or diagnostic use in humans or animals. Not for animal or human consumption.

Purchasers shall not, and agree not to enable third parties to, analyze, copy, reverse engineer or otherwise attempt to determine the structure or sequence of the product.



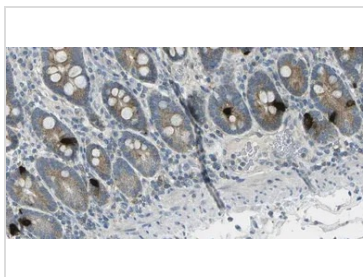
For full product information, images and publications, please visit our [website](#).

DATA IMAGES



GTX60948 IHC-P Image

Paraffin-embedded human small intestine tissue immunostained with GTX60948



GTX60948 IHC-P Image

Paraffin-embedded human duodenum tissue immunostained with GTX60948



For full product information, images and publications, please visit our [website](#).