

Lipocalin-2 antibody [14]

Cat. No. GTX60966

Host	Mouse
Clonality	Monoclonal
Isotype	IgG2b
Applications	WB, ELISA, IHC
Reactivity	Dog

Package
100 µl

Applications

Application Note

*Optimal dilutions/concentrations should be determined by the researcher.

Suggested dilution	Recommended dilution
WB	Assay dependent
ELISA	Assay dependent
IHC	Assay dependent

Not tested in other applications.

Product Note

This antibody binds dog NGAL (neutrophil gelatinase-associated lipocalin)
We do not recommend use of this product for Human, Mouse, Rat samples.

Properties

Form	Liquid
Buffer	10mM Phosphate, 500mM NaCl
Preservative	15mM Sodium azide
Storage	Store as concentrated solution. Centrifuge briefly prior to opening vial. Store at 4°C.
Concentration	Batch dependent (Please refer to the vial label for the specific concentration.)
Immunogen	Recombinant dog NGAL
Purification	Protein A/G purified From tissue culture supernatant
Conjugation	Unconjugated

Note

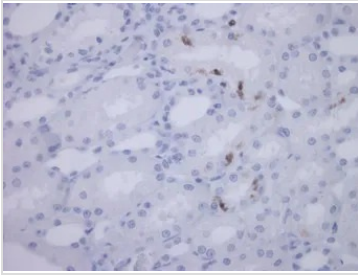
For laboratory research use only. Not for any clinical, therapeutic, or diagnostic use in humans or animals. Not for animal or human consumption.

Purchasers shall not, and agree not to enable third parties to, analyze, copy, reverse engineer or otherwise attempt to determine the structure or sequence of the product.



For full product information, images and publications, please visit our [website](#).

DATA IMAGES



GTX60966 IHC Image

IHC staining in dog kidney tissue. Scattered tubules cells were stained strongly from kidney with acute nephritis. Dilution: 1:50.



For full product information, images and publications, please visit our [website](#).